

Bafokeng Rasimone Platinum Mine (BRPM) Site Visit

To seek and deliver “the good from mining”

2nd December 2011



BRPM Overview

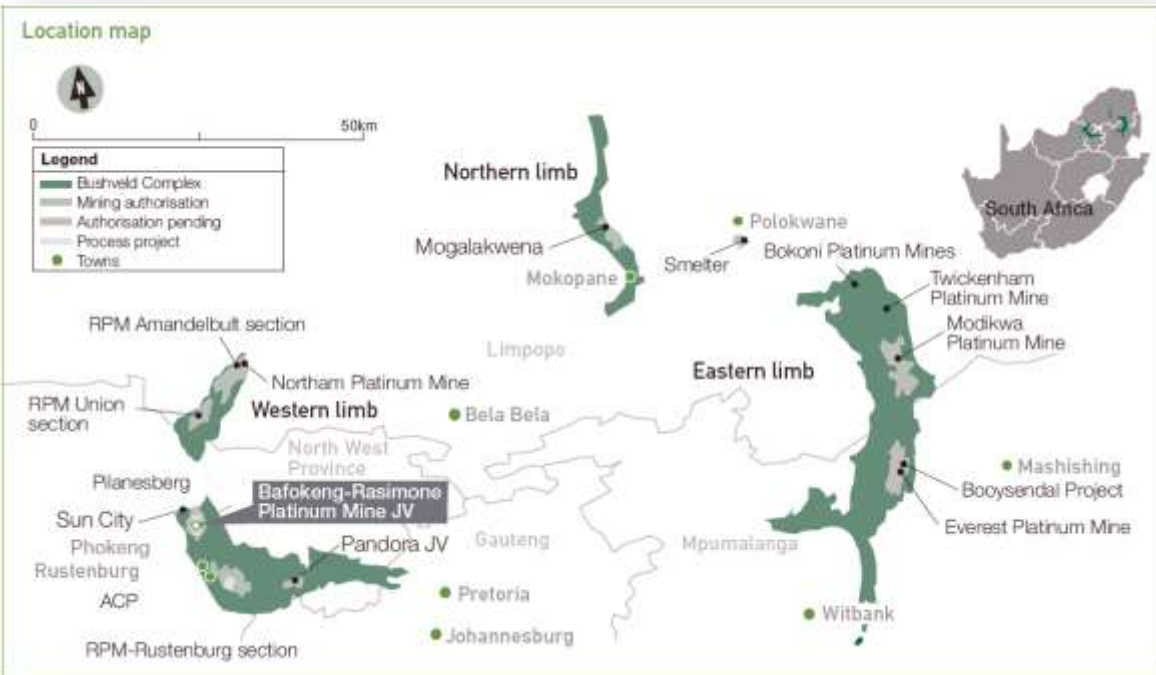
- Introduction
- Locality
- Geological Setting
- Lease area
- Basic Mine Layout
- Key performance indicators
- Process Plant
- Business Improvement
- Social and Labour
- Future
- Conclusion



Geology Overview



Bafokeng Rasimone Platinum-JV locality

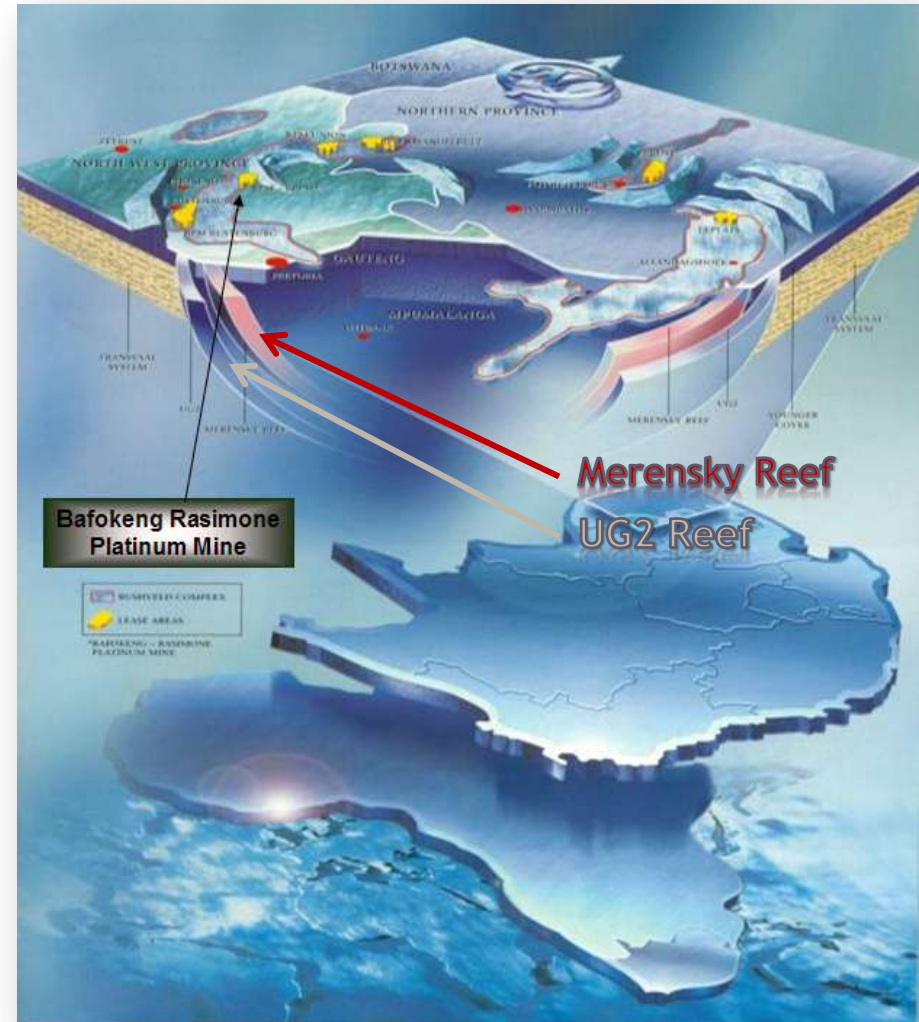


Geological Setting

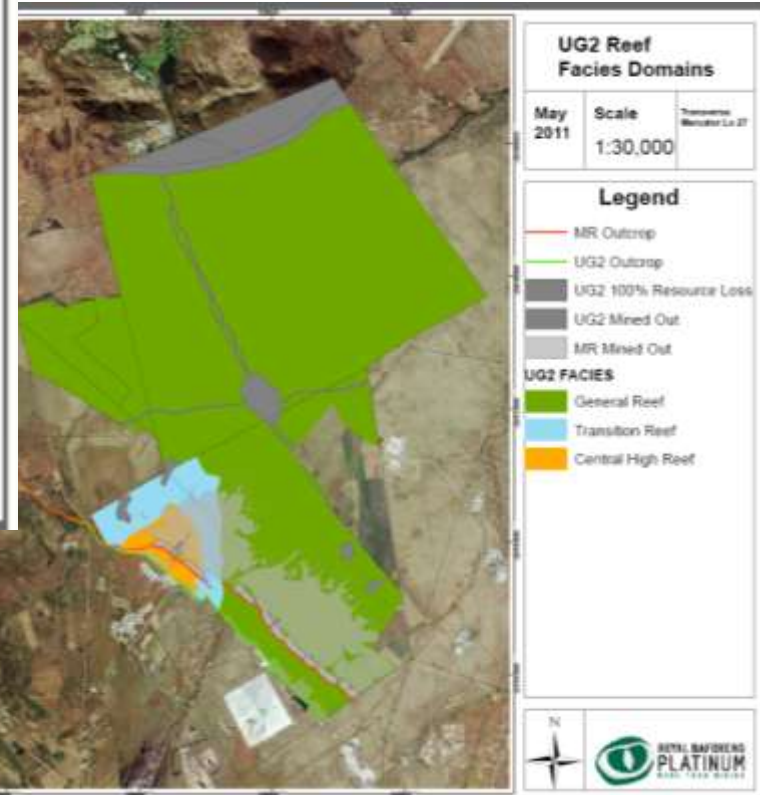
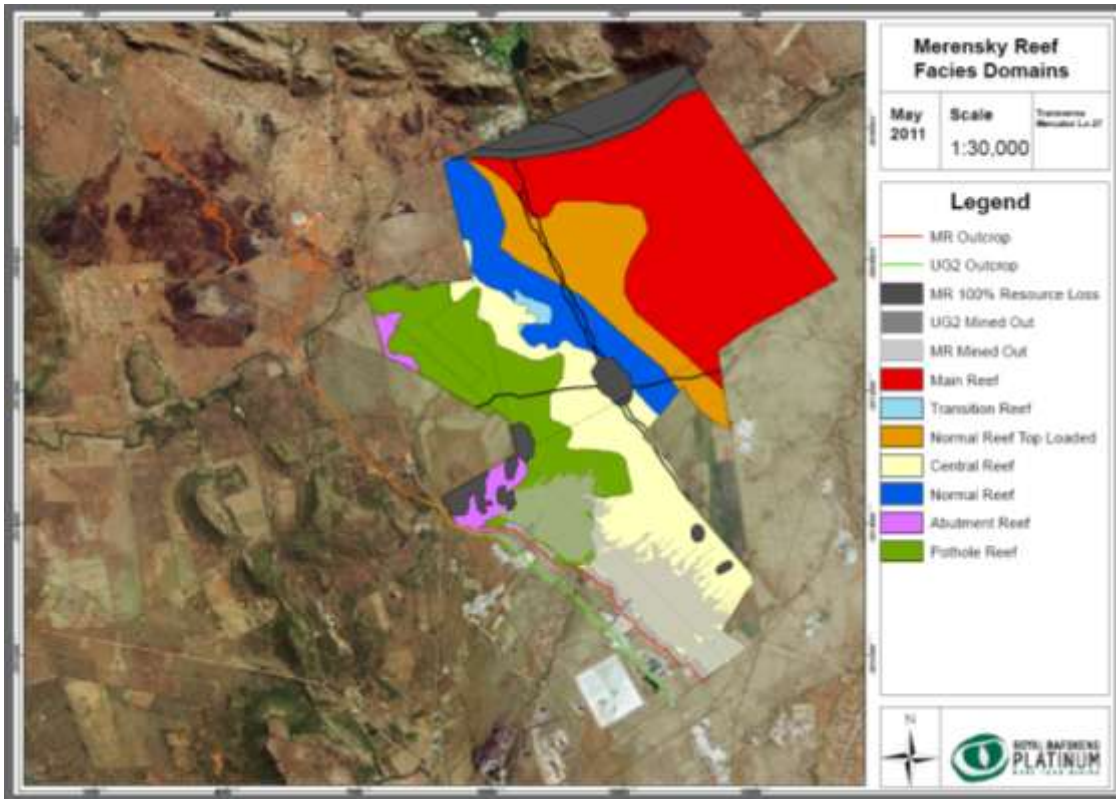
- Exploiting Merensky and UG2 Reefs in the Western Bushveld Complex
- Ore body avg. 12° dip NE

RBPlat Mineral Resources Inclusive of Ore Reserves
By Reef Type, as at 31 December 2010

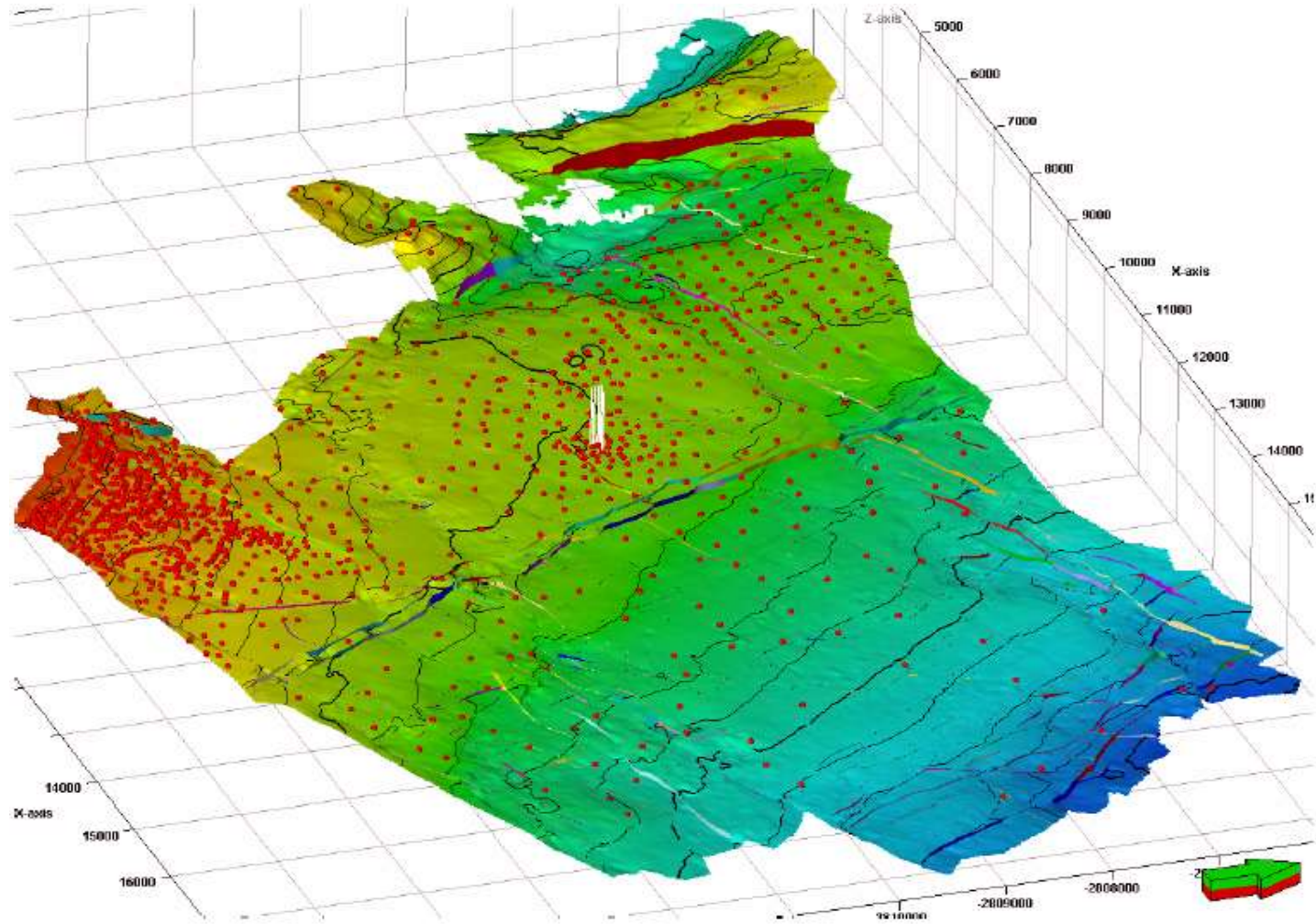
Reef	Category	Metric				Imperial Contained 4E million troy ounces
		RBPlat Attributable Interest (%)	Resource (million tonnes)	Grade (4E g/t)	Contained 4E Tonnes	
Merensky Reef	Measured	67%	36.8	6.9	253.5	8.2
	Indicated	67%	44.7	6.6	293.2	9.4
	Inferred	67%	40.2	7.0	282.3	9.1
	Total	67%	121.7	6.8	829.0	26.7
UG2 Reef	Measured	67%	33.9	5.3	179.5	5.8
	Indicated	67%	72.4	5.2	380.3	12.2
	Inferred	67%	32.4	5.4	174.2	5.6
	Total	67%	138.7	5.3	733.9	23.6



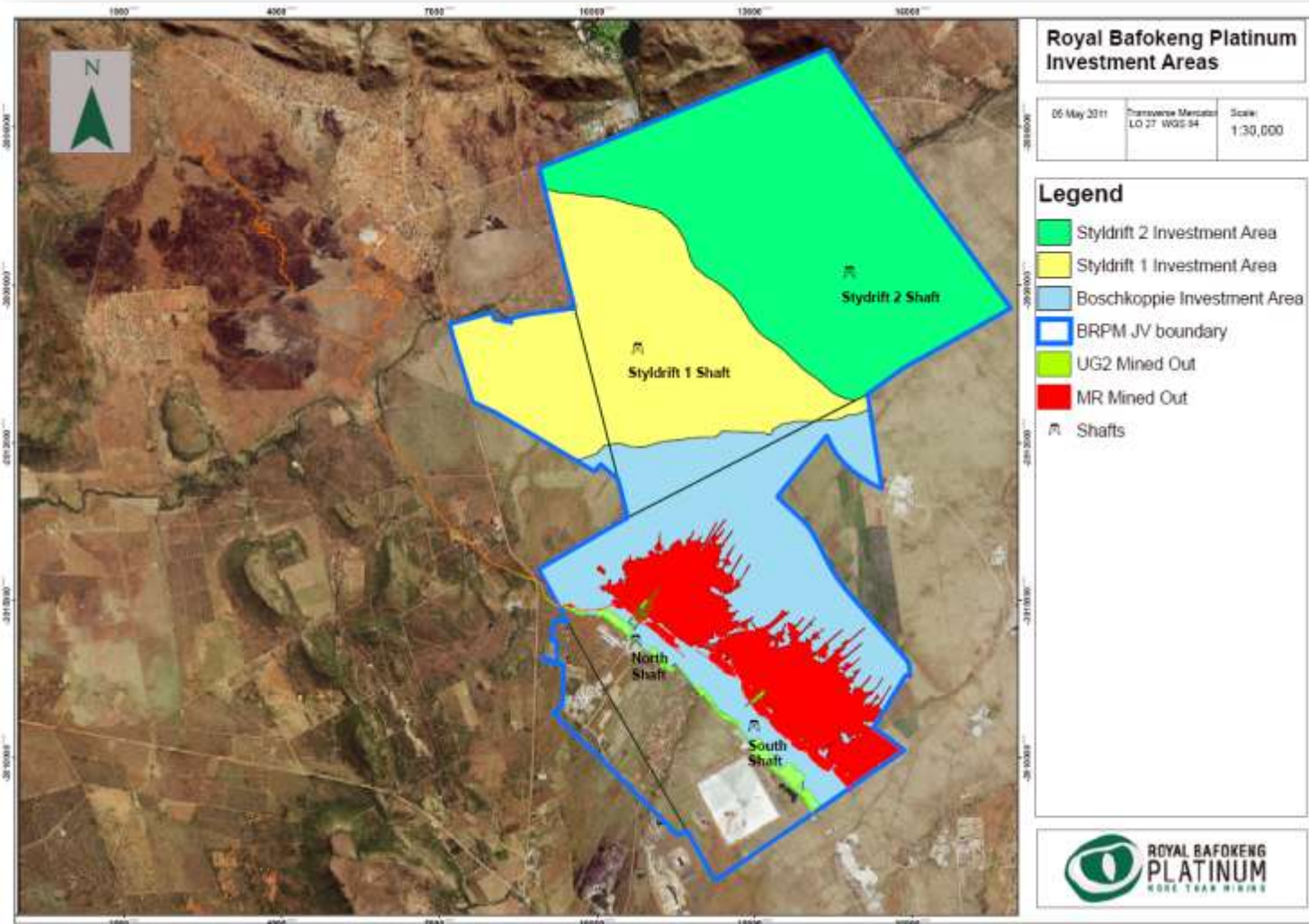
Merensky & UG2 Reef Domains



Exploration: Three Dimensional Seismics



Current operation & future Styldrift shafts



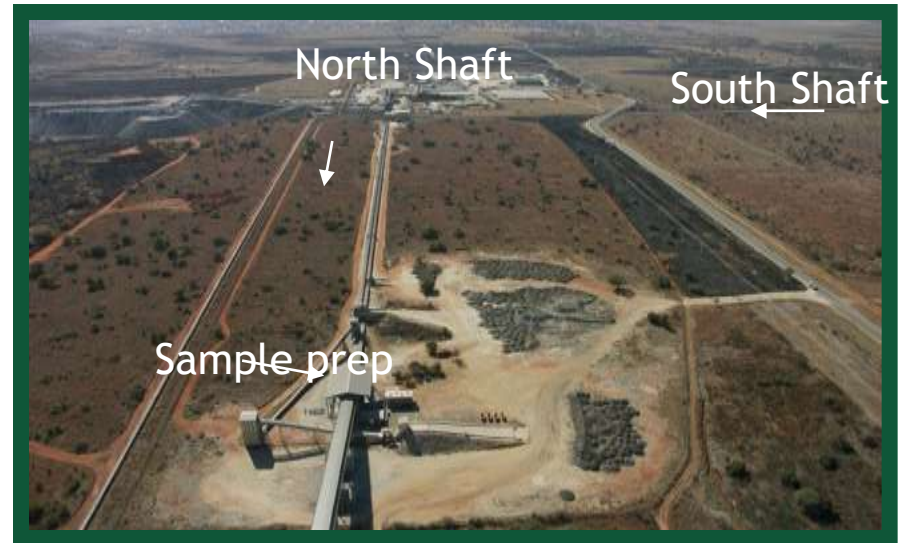
BRPM Mine Overview



South Shaft



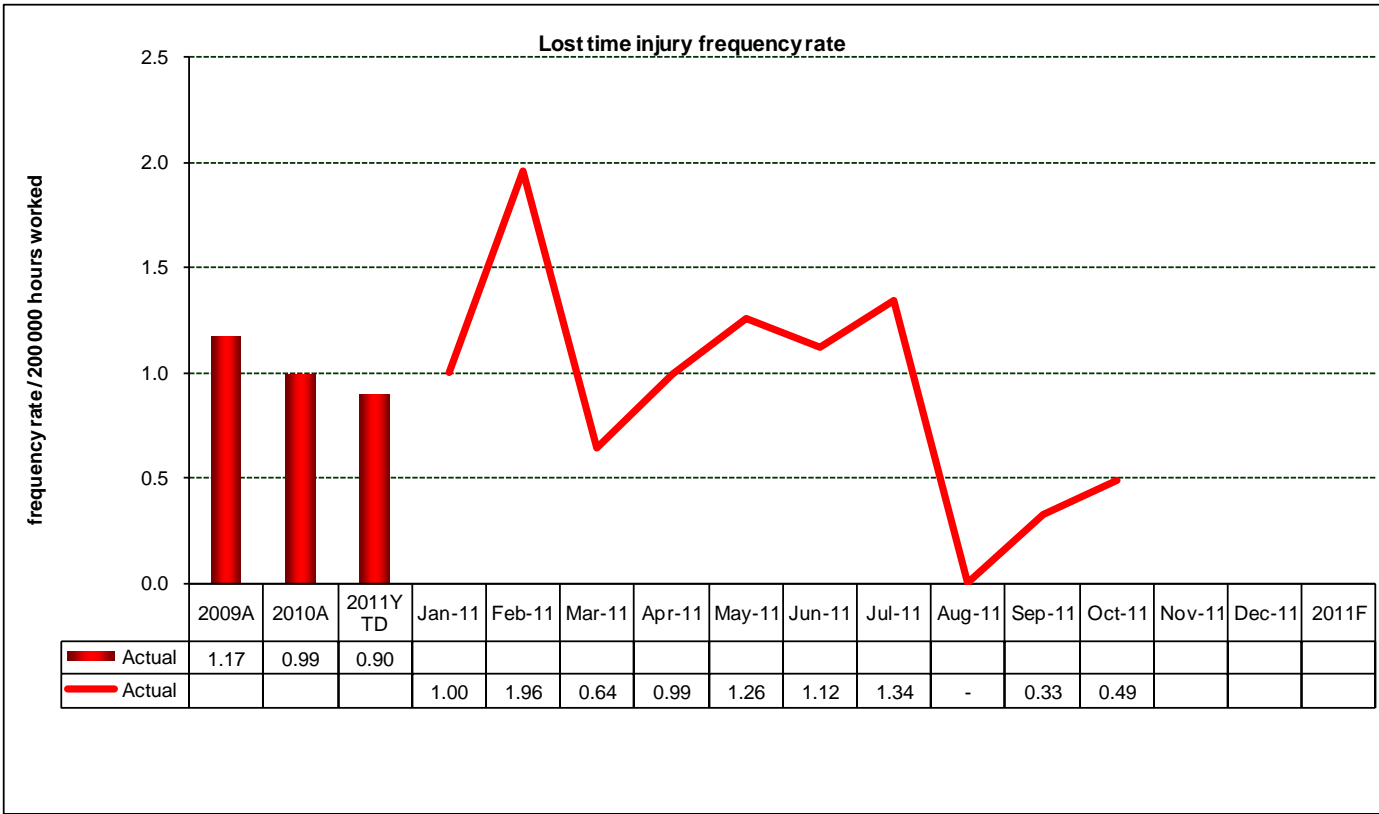
Ore Conveyed to Plant



North Shaft



Safety



Health & Safety

OHSAS 18001 Accredited

Environmental

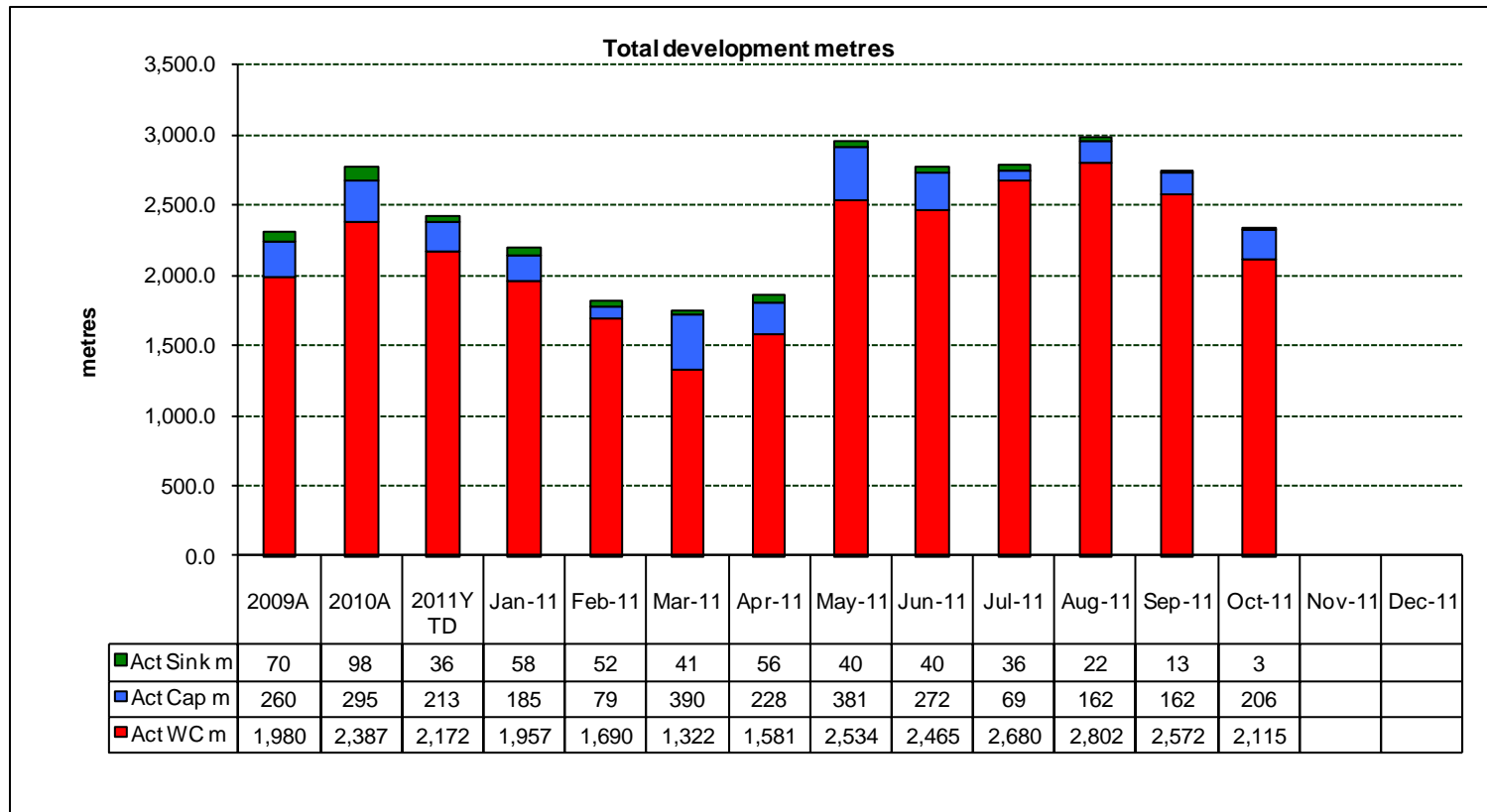
ISO 14001 Certificated

HRD Centre (NQA accredited)

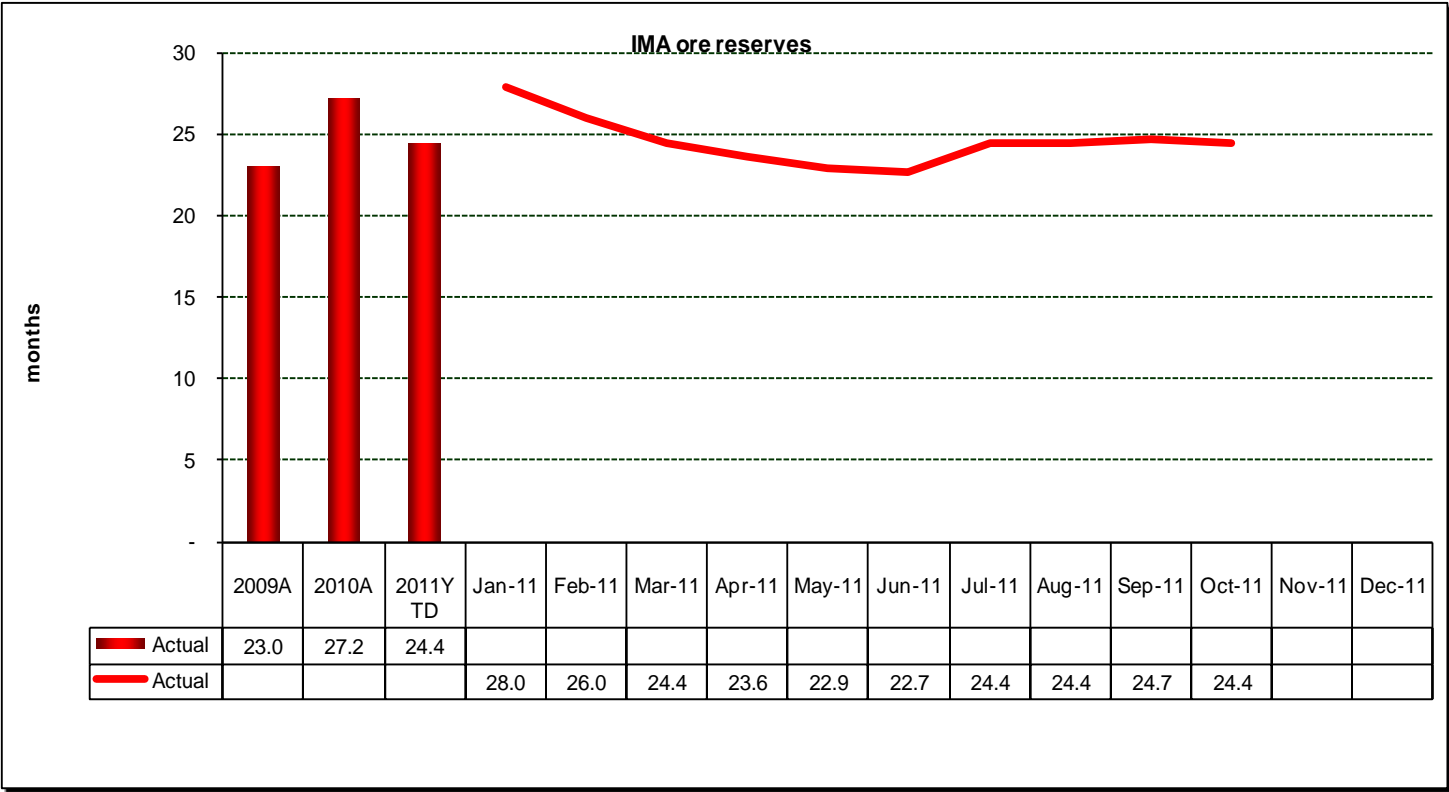
ISO 9001 Certificated



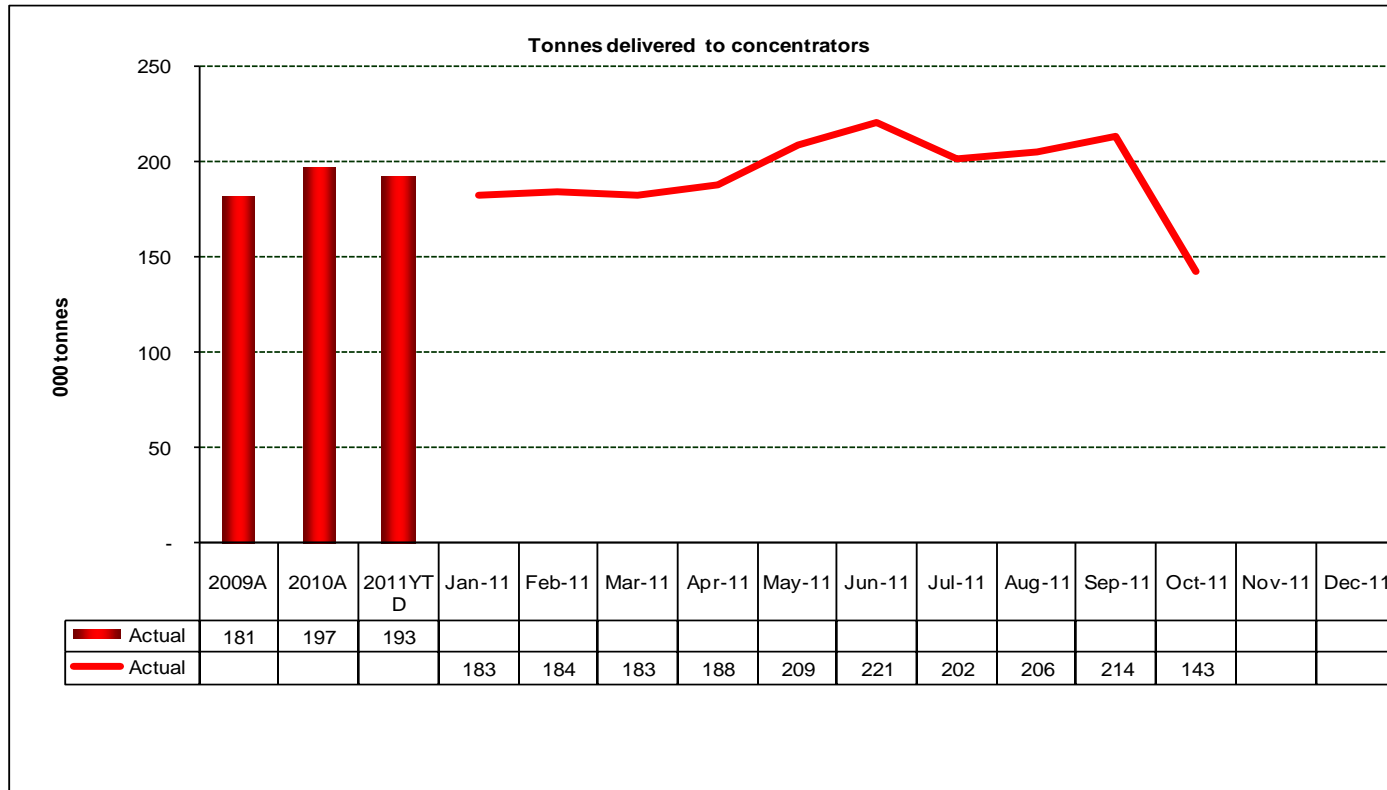
Development



IMA Ore Reserves (months)



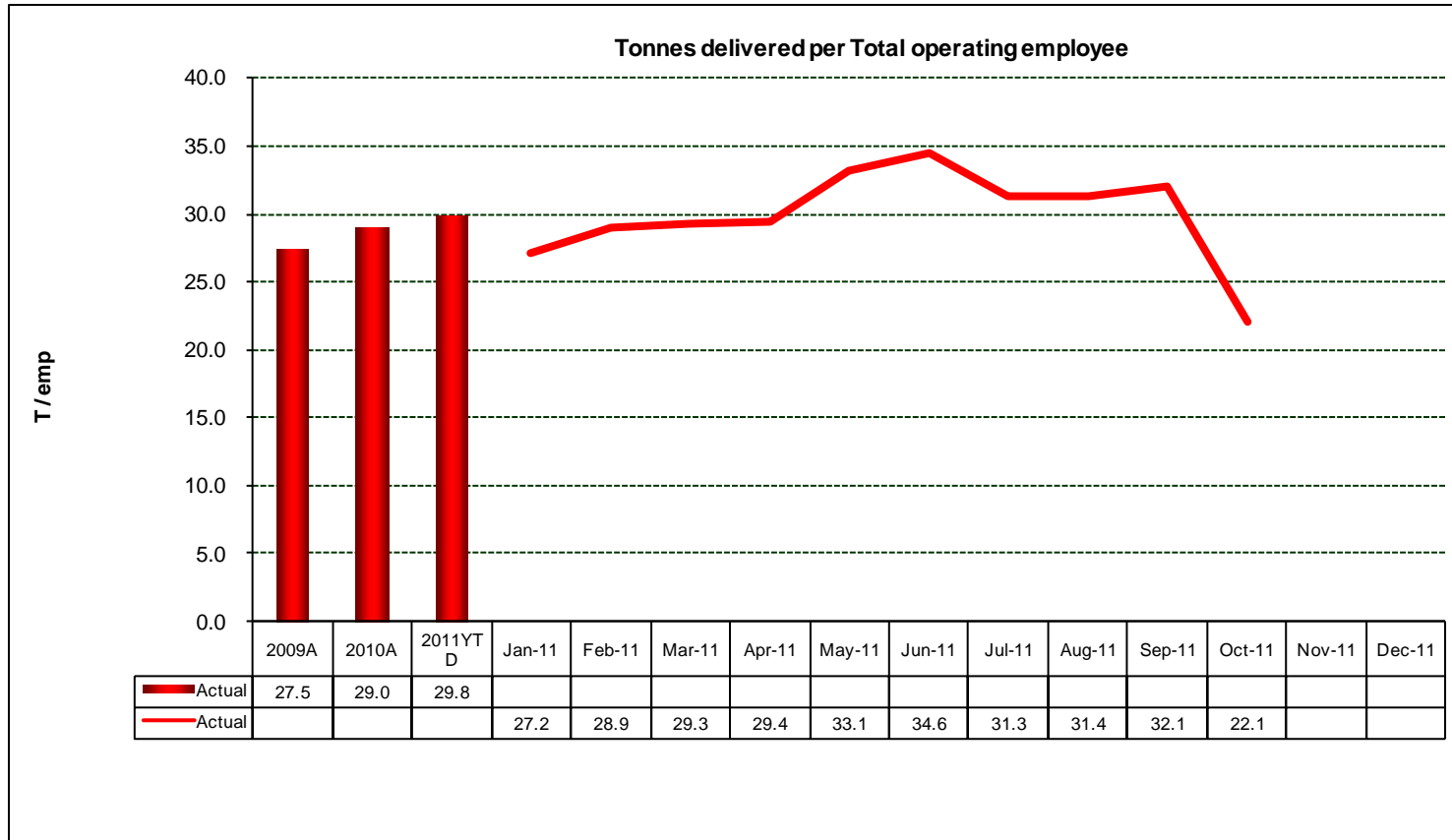
Tonnes (Monthly average)



Stoppages for 2011 include Section 54's & JIC Strike



Efficiency



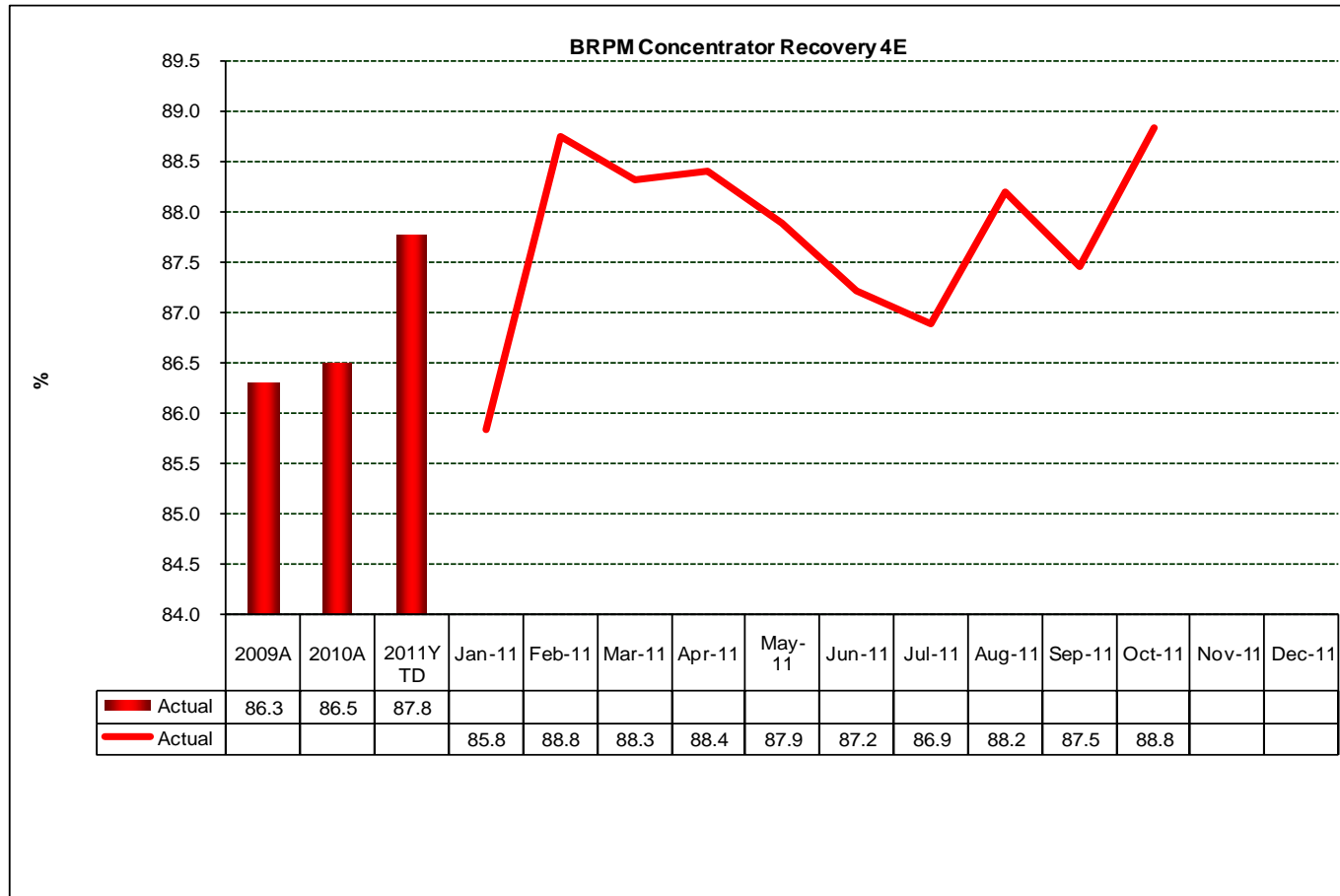
Process Plant



Process



4E Recovery



World Class concentrator/ Project Kgolo





Business Improvements

- Stope drill pattern
- Gully 9 hole director
- Winch repairs and spare motors
- Winch installation upgrade
- Anflex loaders/desludging
- Scraper configuration
- Material handling
(6 level rail switches, material cars, forklifts, belt schedule)

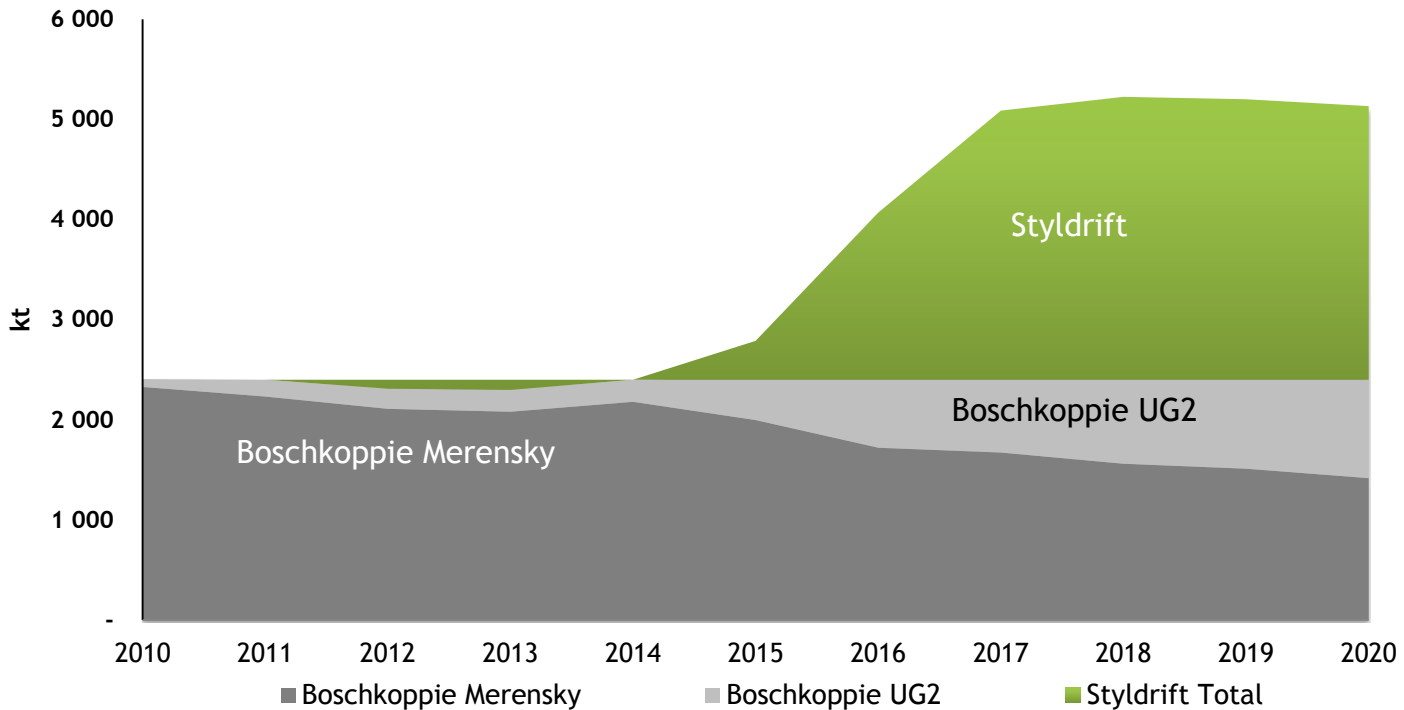


Social and Labour *-Communities-*



Future Production

- Focus is on Merensky, with significant quality UG2
- Merensky production growth at Styldrift from 2017
- UG2 to gradually replace Merensky production at Boschkoppie



BRPM Mine Conclusion

- Stoppages including Section 54's and JIC Strike
- UG2 to increase flexibility and tonnage
- Plant upgrade
- Increase in the number of levels available
- Phase II
- North Shaft Phase III

