

# Bafokeng Rasimone Platinum Mine -JV

BRPM (Boschkoppie)

Brief Overview

To seek and deliver “the good from mining”

30th March 2012

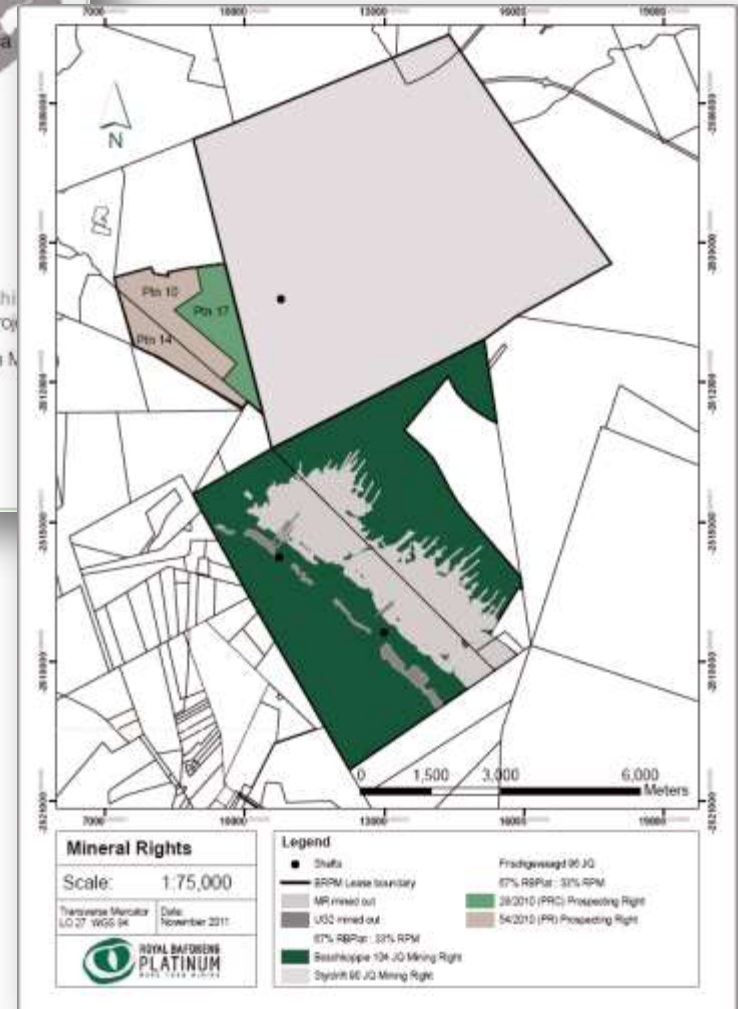
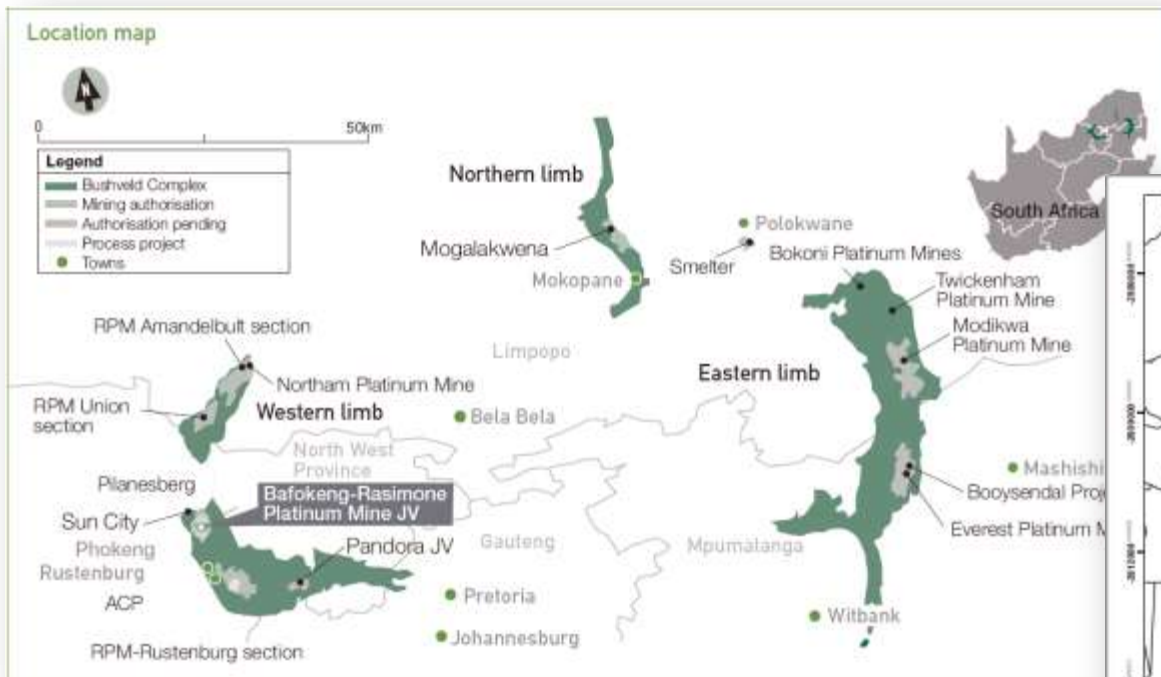
1. Introduction
2. Locality
3. Geological Setting
4. Mine Overview
5. Safety and Production Indicators
6. Process Plant
7. Social and Labour
6. Conclusion & Outlook

# Geological Overview



*Dirk Spaanspoel*  
*Digital Delights*  
0833825800

# Bafokeng Rasimone Platinum-JV locality





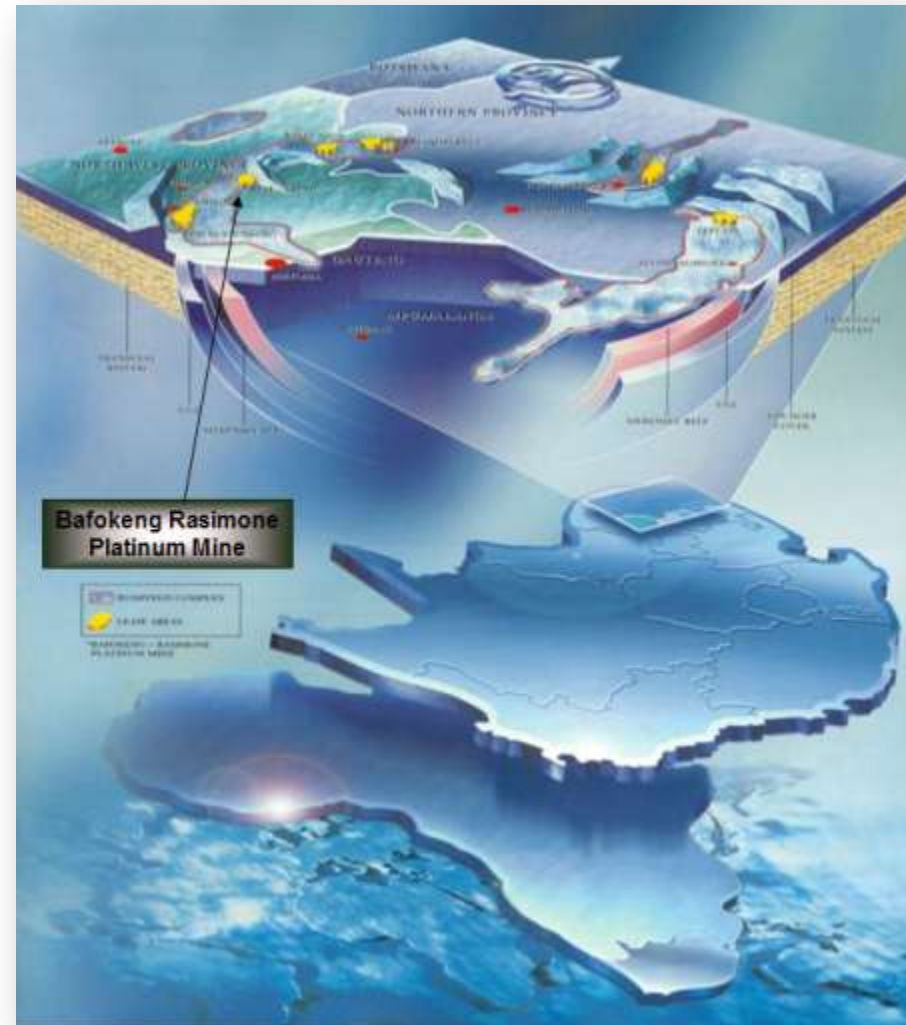
# Geological Setting

- Exploiting Merensky and UG2 Reefs in the Western Bushveld Complex
- Ore body avg. 12°dip NE

## RBPlat MINERAL RESOURCES INCLUSIVE OF MINERAL RESERVES

Figures reflect 67% attributable interest to RBPlat

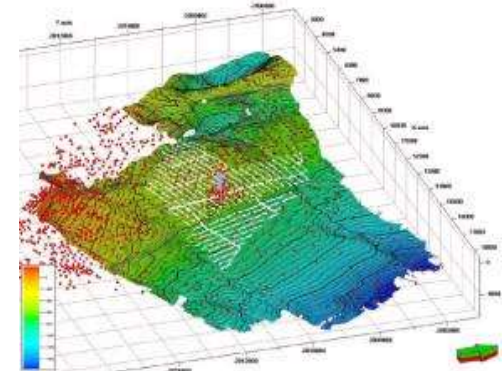
REEF	RESOURCE CLASSIFICATION	TONS (Million Tons)	GRADE (4E g/t)	CONTENT (4E Million Troy Ounces)
		Dec. 2011	Dec. 2011	Dec. 2011
MERENSKY	MEASURED	36.09	7.17	8.32
	INDICATED	48.96	6.72	10.57
	INFERRED	32.59	7.24	7.59
	<b>TOTAL</b>	<b>117.63</b>	<b>7.00</b>	<b>26.48</b>
UG2	MEASURED	38.22	5.35	6.57
	INDICATED	65.18	5.21	10.92
	INFERRED	29.79	5.50	5.27
	<b>TOTAL</b>	<b>133.19</b>	<b>5.31</b>	<b>22.76</b>



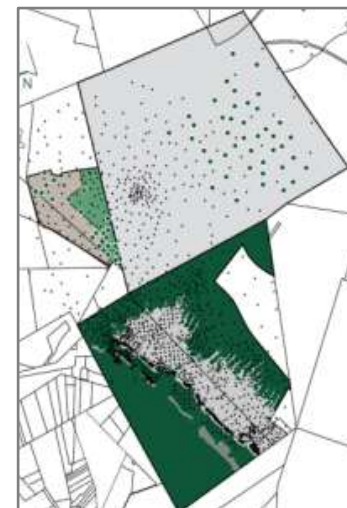
# Resource optimisation strategy and exploration

- Well-understood, high-quality ore body
  - Cumulative drilling up to end of 2011
    - total intersection points: 9,150
    - total drillholes: 6,023
    - total meters: 1,397km
  - 2011 exploration:
    - 65 drillholes, 70,000m (50,342m Styldrif II, 19,658m Frischgewaagd)
    - 260 reef intersections per reef horizon
    - 0.32% variance between planned reef intersections (seismic data) and actual
  - 2012 planned exploration:
    - Styldrif II: 40 drillholes, 45,000m
    - Boschkoppie: 10 drillholes, 7,500m
    - Objective - increase resource classification confidence
  - 2012 - 2013 updated interpretation of aeromagnetic and 3D seismic surveys

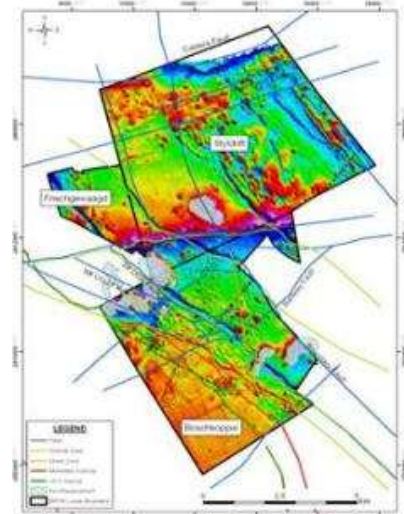
3D seismic survey



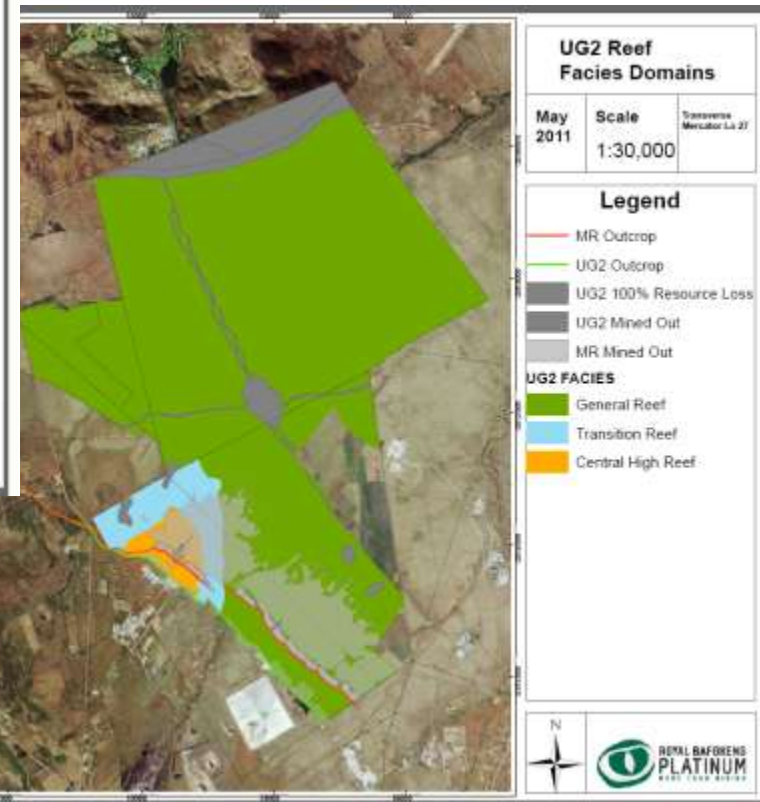
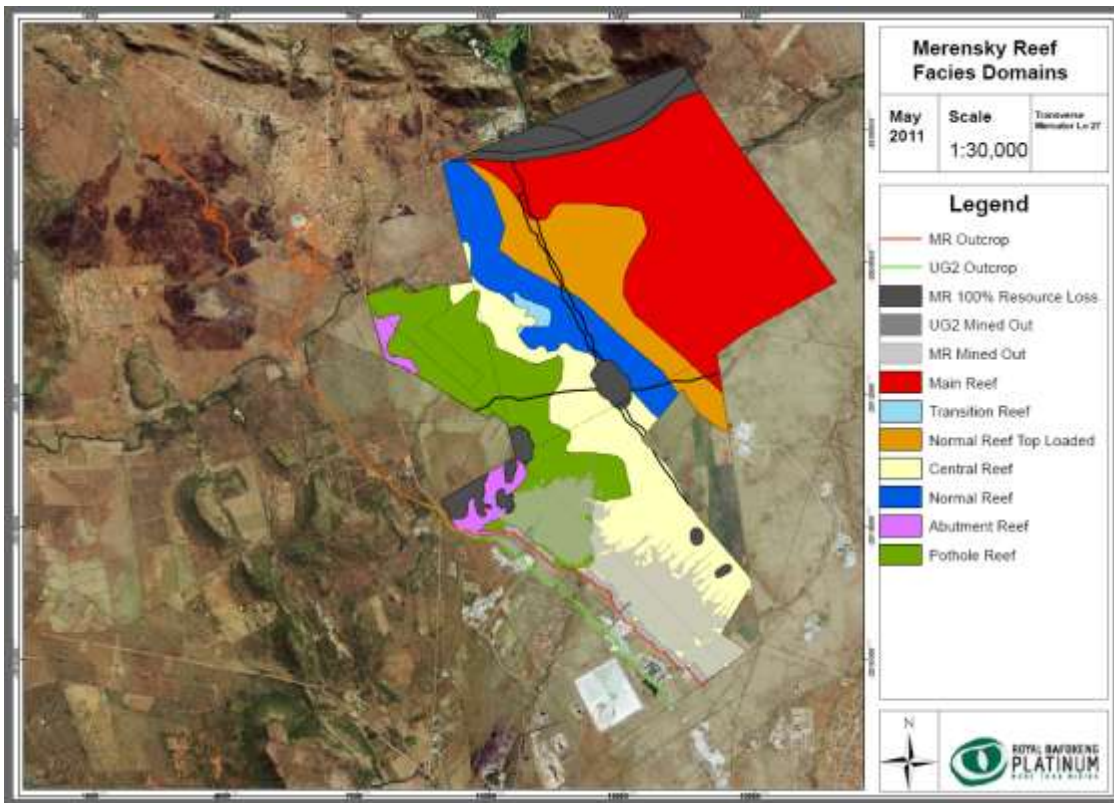
2011 Exploration drilling



Aeromagnetic survey



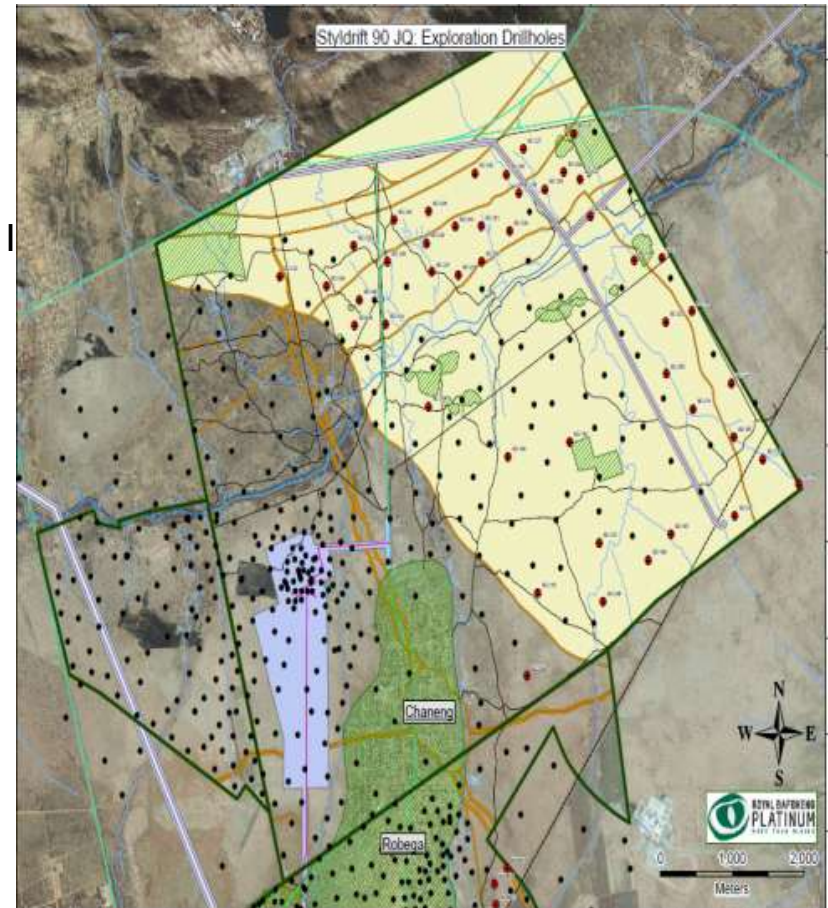
# Merensky & UG2 Reef Domains





## Further organic growth in Styldrift II

- Styldrift II project area
  - resource area  $\pm$  23 million m<sup>2</sup>
  - depth 900m – 1,400m, average dip 9<sup>o</sup>
  - average Merensky/UG2 middling 35m
- Potential size of investment similar to Styldrift I
- Opportunity will be evaluated through:
  - study consisting of a concept, pre-feasibility and feasibility study
  - exploration drilling programme which will develop the resource classification to support various study levels
- Concept study due for completion Q1 2012





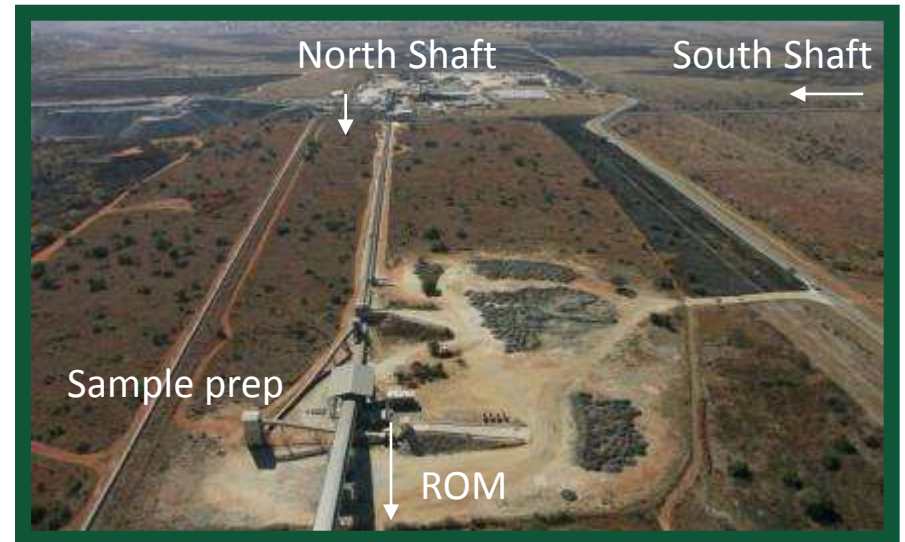
# BRPM Mine Overview

# Infrastructure

## South Shaft



## Ore Conveyed to Plant



## North Shaft

# Belt Ridding





# Safety & Production indicators

# In Memory of Castigo Mario Ndeve



We remember Castigo Mario Ndeve who passed away on 6<sup>th</sup> February 2012 as a result of injuries sustained during a fall of ground incident at BRPM's North Shaft.

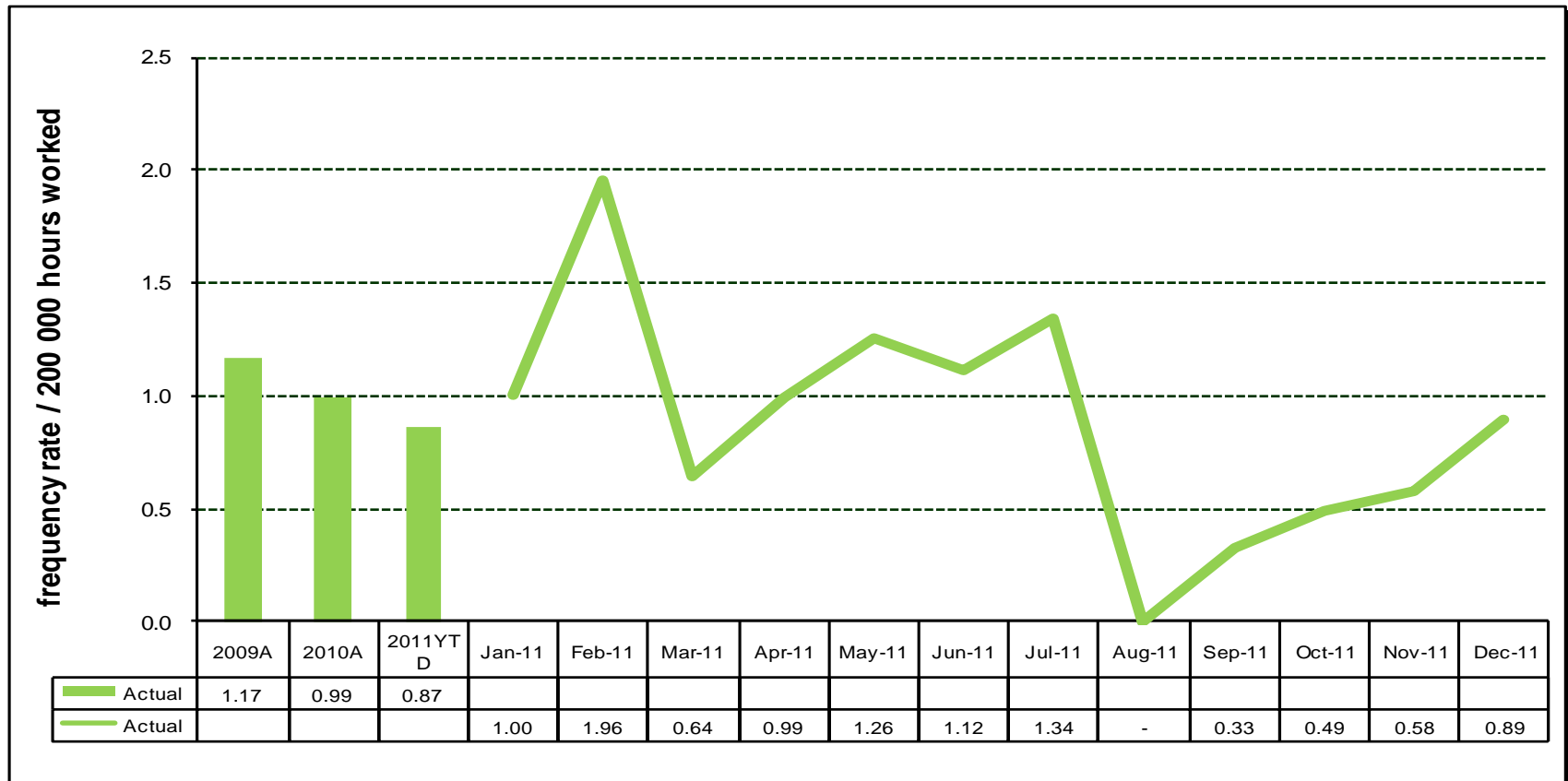
## Personal Information

- Name : Castigo Mario Ndeve
- Occupation : Cheesa (explosives assistant)
- Birth Date : 16 August 1977 (34 years old)
- Wife : Anita Soia (32 years old)
- Children : 4 children (3, 4, 5 and 8 years old)
- Home : Chibuto, Gaza province, Mozambique
- Commenced : 20 April 2011 (9 months)

## Accident Information

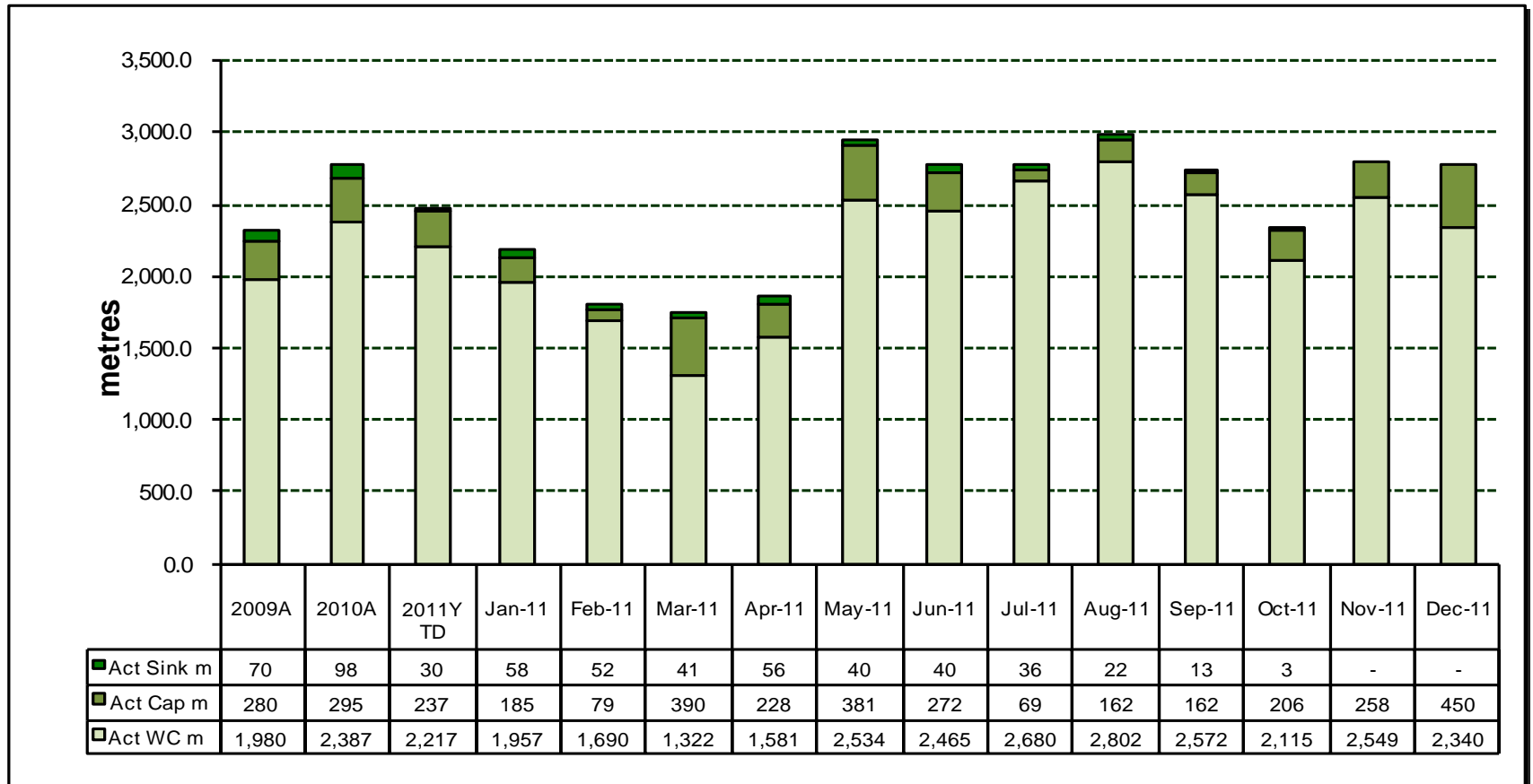
- Nature : Fall of ground
- Work place : North shaft \ 6L south \ 7 line \ panel 1 east (ledge)
- Date : Monday, 06 February 2012
- Time : 13h30

# Lost time injury frequency rate





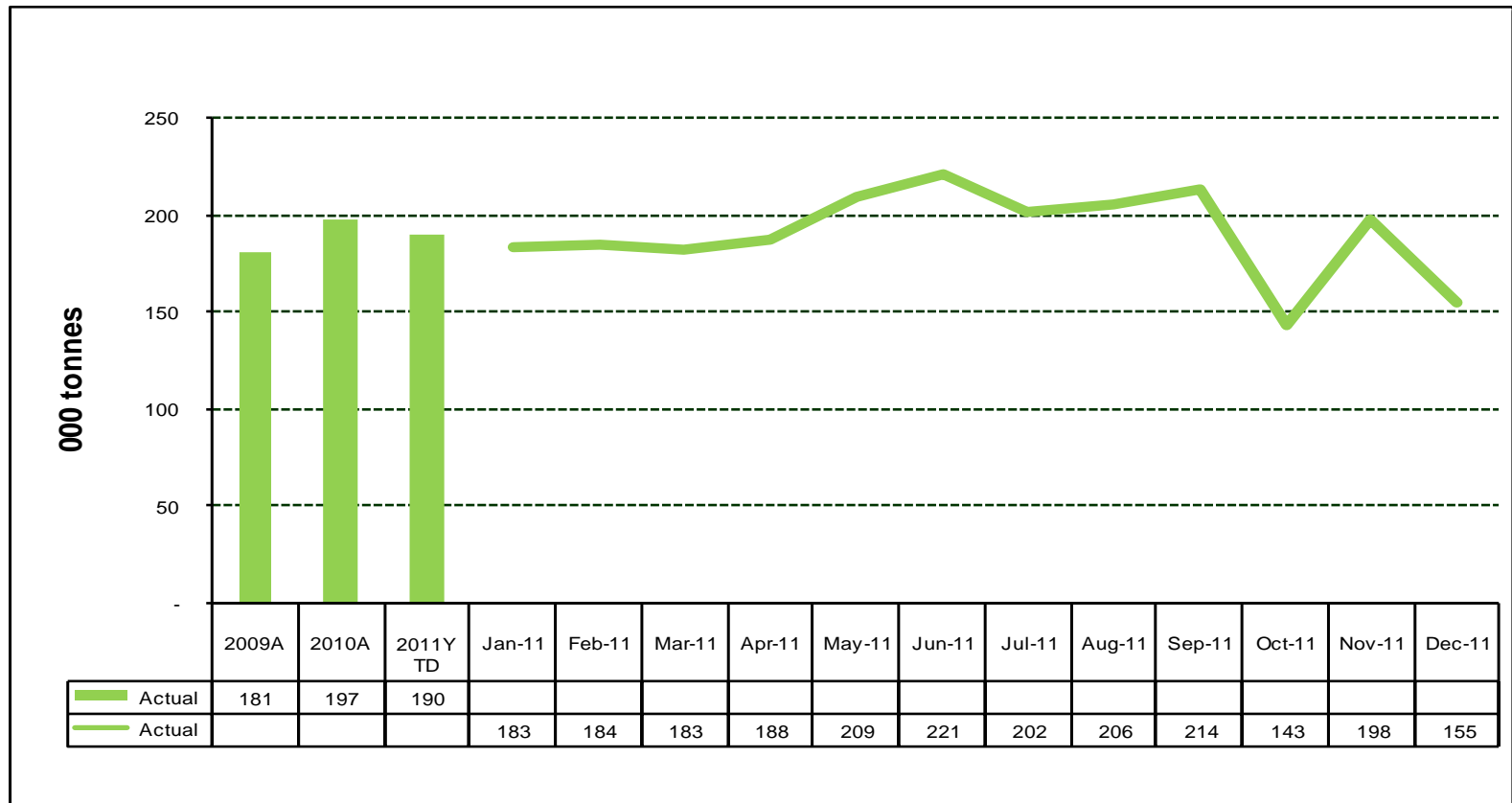
# Total Development metres



# IMA Ore Reserves

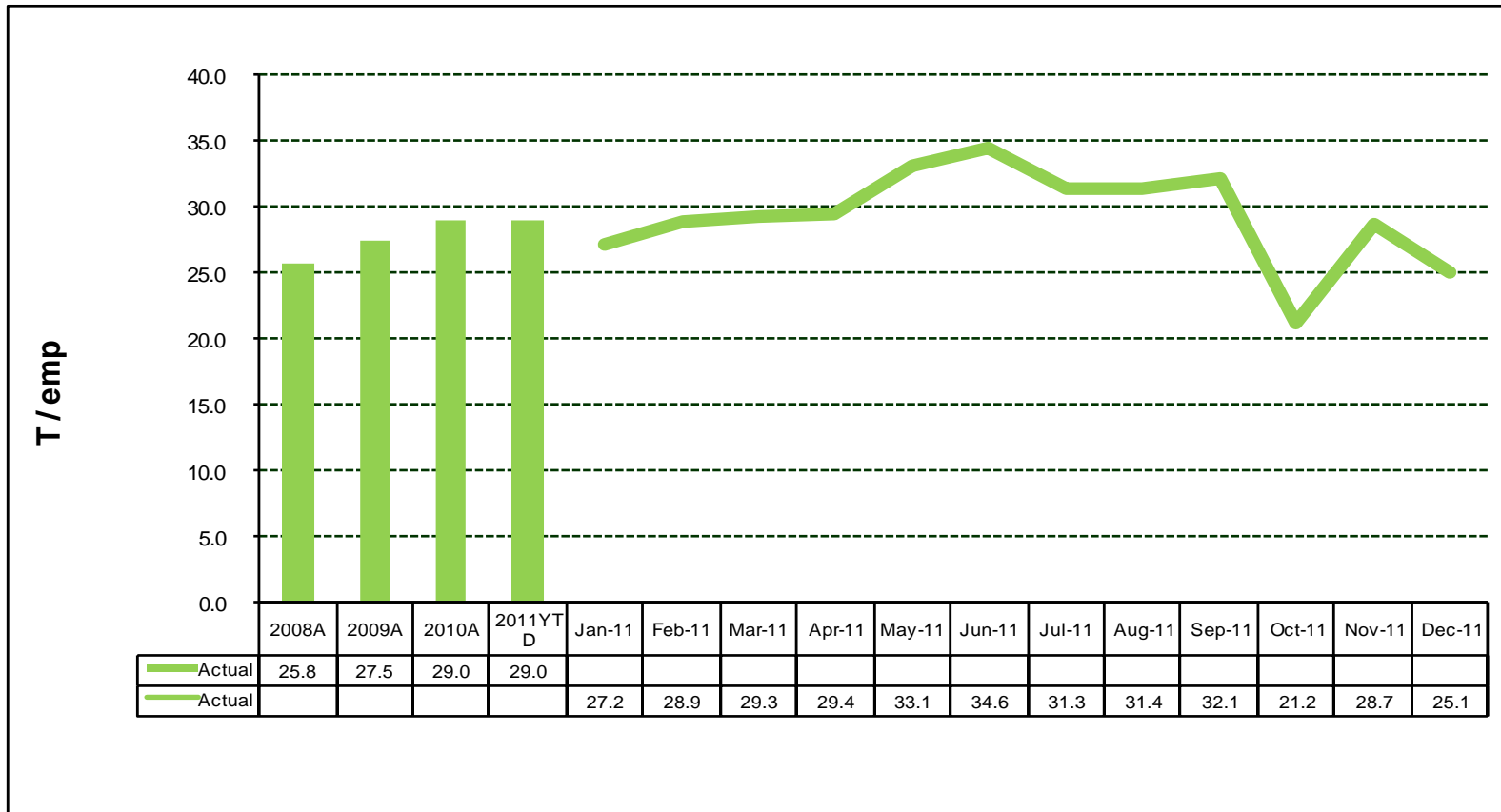


# Monthly Average Tonnes Delivered to Concentrator





# Tonnes Delivered to Concentrator per total Operating Employee

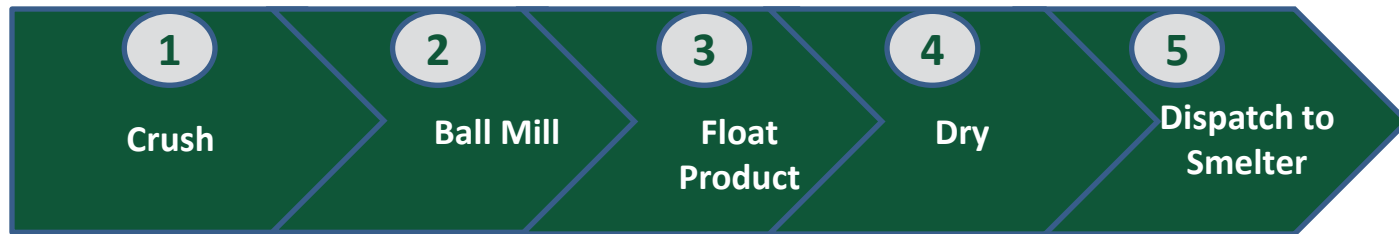


# Process Plant

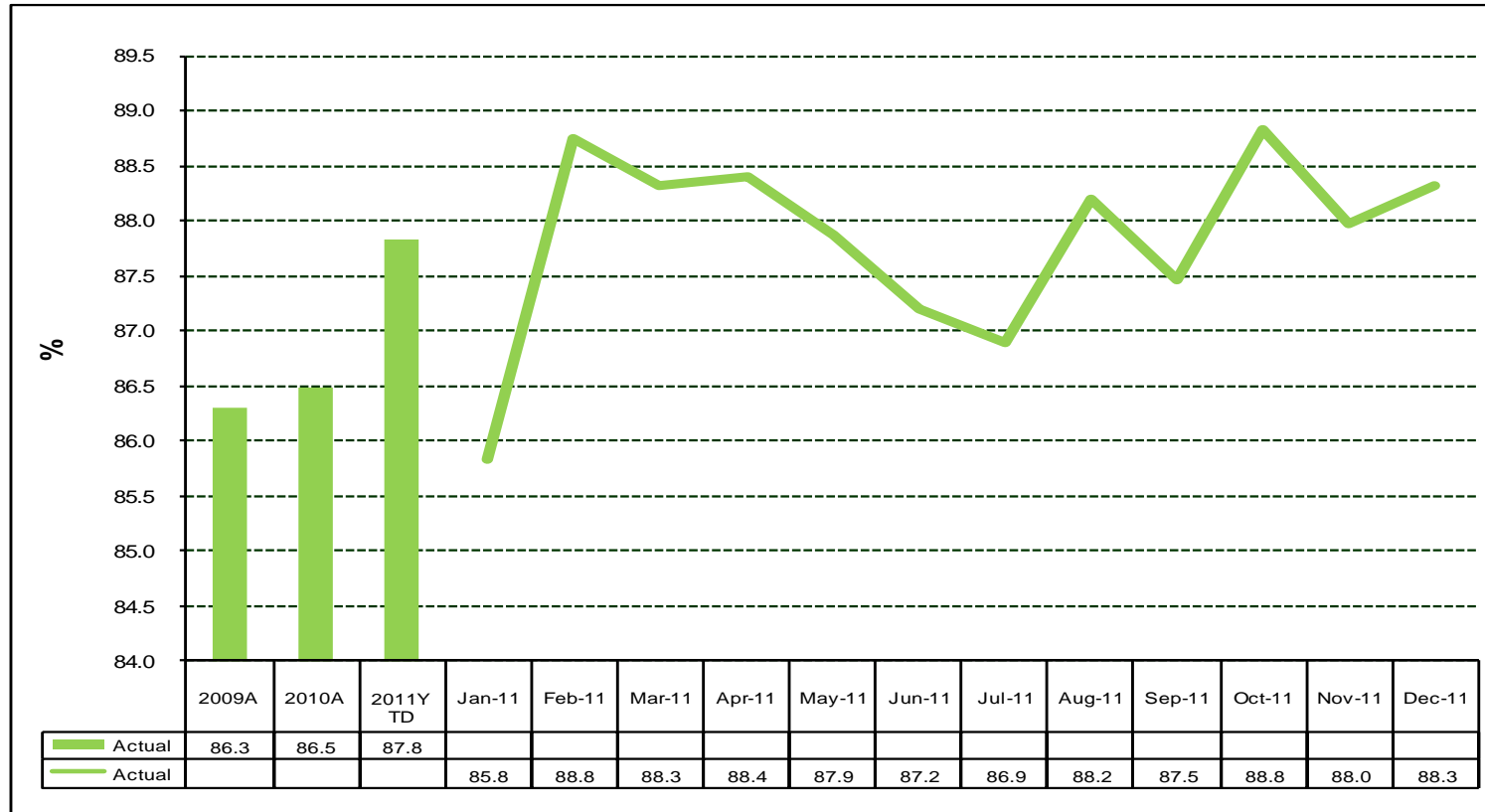
# Process Plant



## Process



# 4E Concentrator Recovery





- **Set up mining to achieve efficiencies**  
(Stope Drill Pattern, Gully 9 hole director, Winch Repairs and spare motors, Winch installation upgrade, Anflex Loaders /desludging, Scraper configuration, Material Handling )
- **Monitor and manage initiatives**
- **Reduce fixed cost base**

# Social and Labour -Communities-

2012

1. **Focus Area:** Poverty Alleviation & Job Creation Project: Commercial Agri Business (Hatchery / Cattle & Crop Farming)



2. **Focus Area:** Education Support Project: Sports Facilities



3. **Focus Area:** Infrastructure Project: Light Industry Center

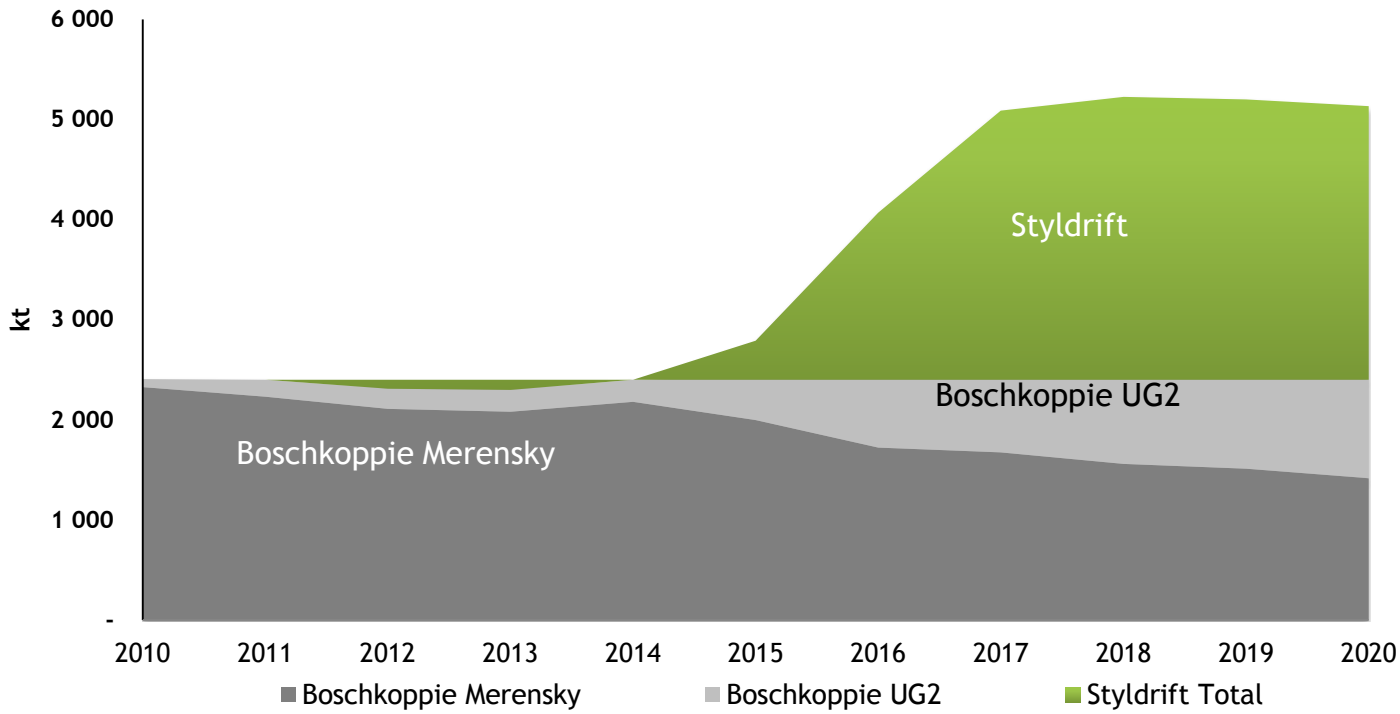




# Future Production



- Focus is on Merensky, with significant quality UG2
- UG2 to gradually replaces Merensky production at Boschkoppie



## Summary

---

- Ore Body well understood
- Opportunity for Organic Growth
- Shallow ore body with good infrastructure
- Improved safety performance YOY
- Stoppages impacted on volume (investing in increased face length)
- Healthy IMA ore reserve position
- Improved Plant recoveries
- Community engagement
- Focus is on Merensky, with significant quality UG2

# Thank you

