

LEVERAGING OUR ASSETS THROUGH FLEXIBILITY



**MORE  
THAN  
MINING** >

RBPlat - Styldrift | Site Visit  
17 November 2015

# Disclaimer

The information presented in this presentation is of a general nature and the forward-looking information, opinions and beliefs of the Company and its affiliates are based on various market related assumptions. Changes in market circumstances after the production of the information may impact on the accuracy thereof. No assurance can therefore be given as to the accuracy of any information after publication.

Before relying on the information, investors or potential investors should carefully evaluate the accuracy, completeness and relevance of the information and should preferably obtain professional relevant advice.

The Company, its directors, officers, managers or employees, advisers or representatives accept no responsibility or liability whatsoever for any loss howsoever arising from any use of this presentation or its contents or otherwise arising in connection with this presentation.

This presentation also includes market share and industry data obtained by the Company from industry publications and surveys and the Company does not have access to the facts and assumptions underlying the numerical data, market data and other information extracted from publicly available sources. As a result, the Company is unable to verify such numerical data, market data and other information. The Company assumes no responsibility for the correctness of any market share or industry data included in the materials and presentation.



CONTENTS

1. Safety, health and environment
2. Location and brief geological overview
3. The PGM industry and our strategies
4. Styldrift I - The way forward
5. Conclusion

Safety, health and  
environment



# The RBPlat SHE Strategy - Zero harm through resilience

## Safety

- Rates in-line with national milestones
- Key targets
  - › ZERO fatalities
  - › Target 20% year-on-year improvement in LTIFR and SIFR

## Road to resilience

- Competent people
- Fit for purpose equipment
- Safe work practices
- Safety Risk Management Process (SRMP)

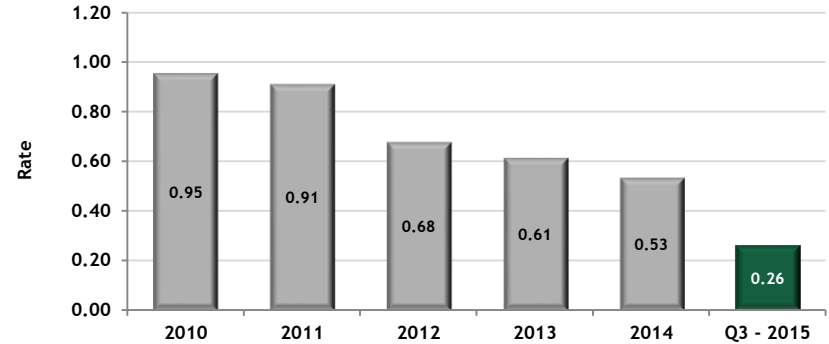
## Health

- Annual percentage hearing loss difference <2.5%
- ZERO TB deaths for persons on the RBPlat TB program
- Contractors onto Platinum Health medical aid

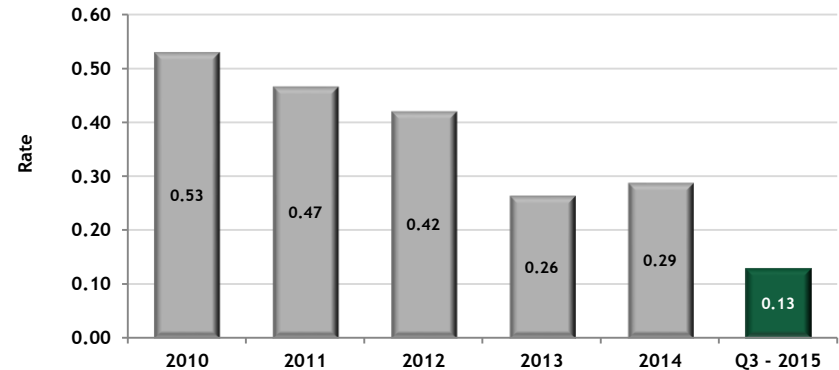
## Environment

- Obtain ISO14001 certification at Styldrifft in 2016
- Maintain Iso14001 certification at BRPM

LTIFR /200,000



SIFR /200,000

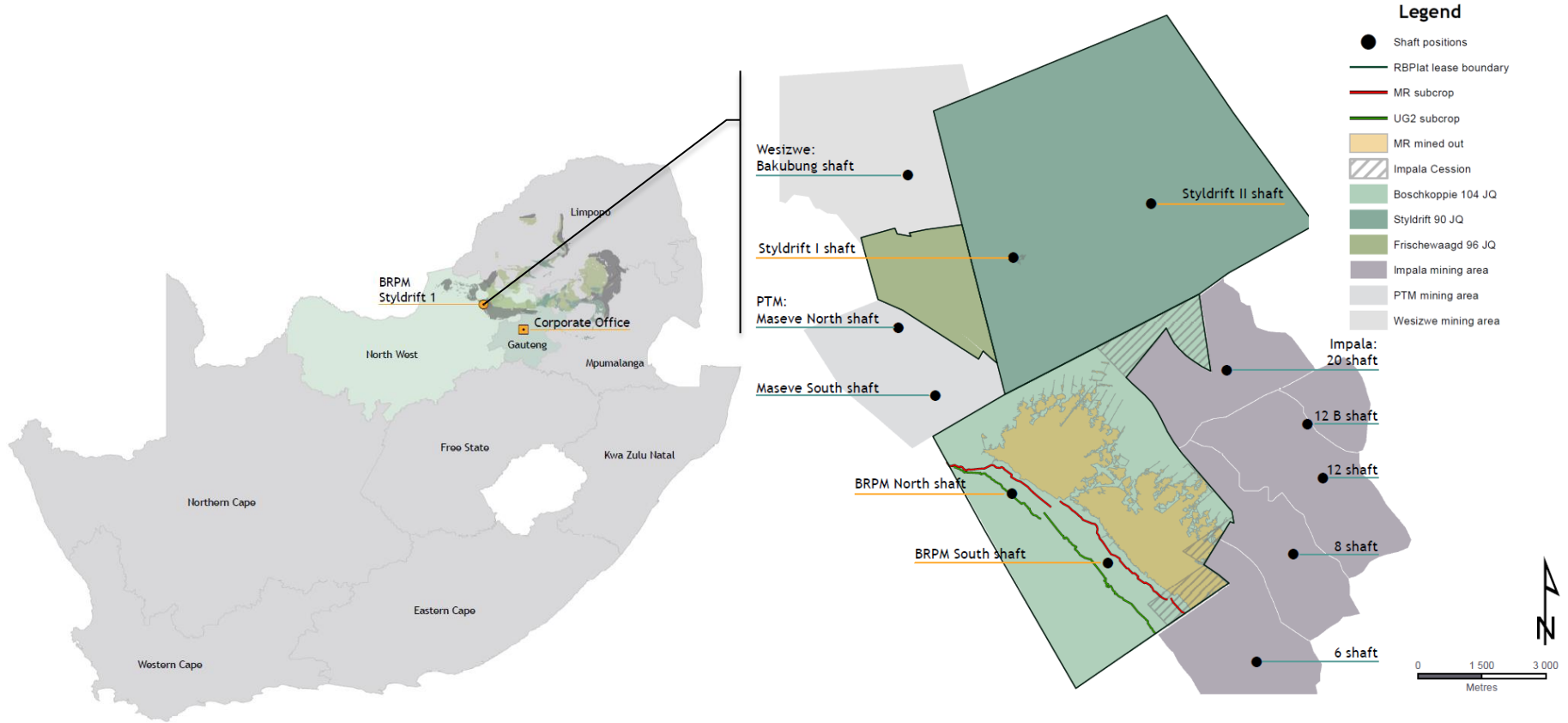


A worker wearing a white hard hat, a high-visibility yellow and green safety vest over an orange shirt, and colorful work gloves is operating a drilling rig. The rig is mounted on the back of a white truck. The worker is looking upwards at a vertical metal rod being lowered from the rig. The background shows a dry, open landscape with sparse trees and mountains in the distance under a clear blue sky. Various pieces of equipment, including a red generator, a black storage box, a blue water container, and a grey metal box, are scattered on the ground to the right of the worker. The truck's license plate is partially visible and reads 'GP'.

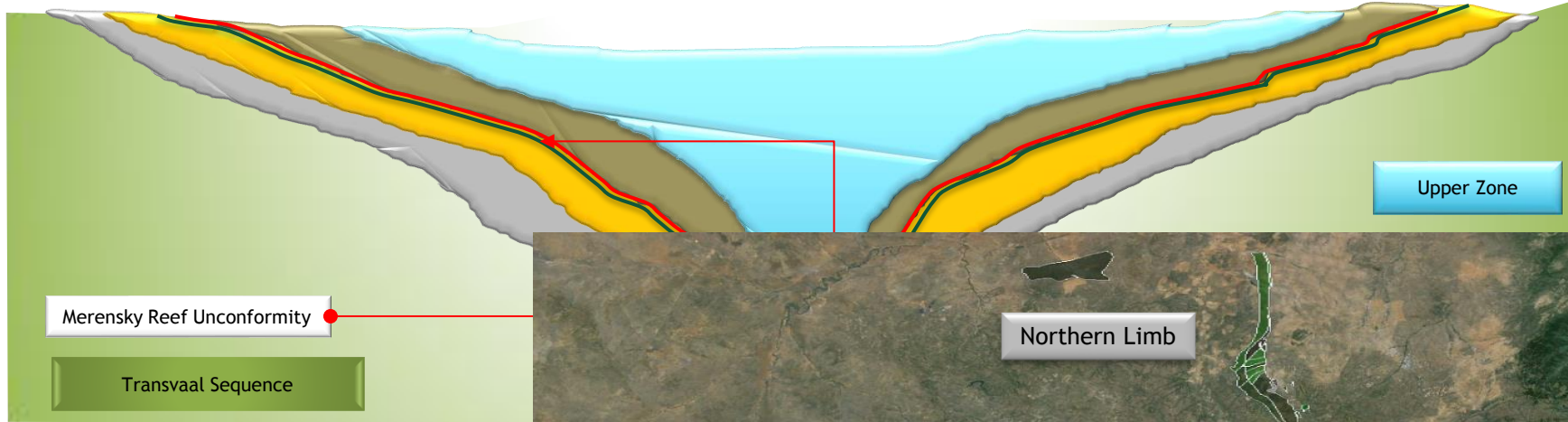
## LOCATION AND GEOLOGICAL SETTING



# BRPM JV location relative to neighbouring mines

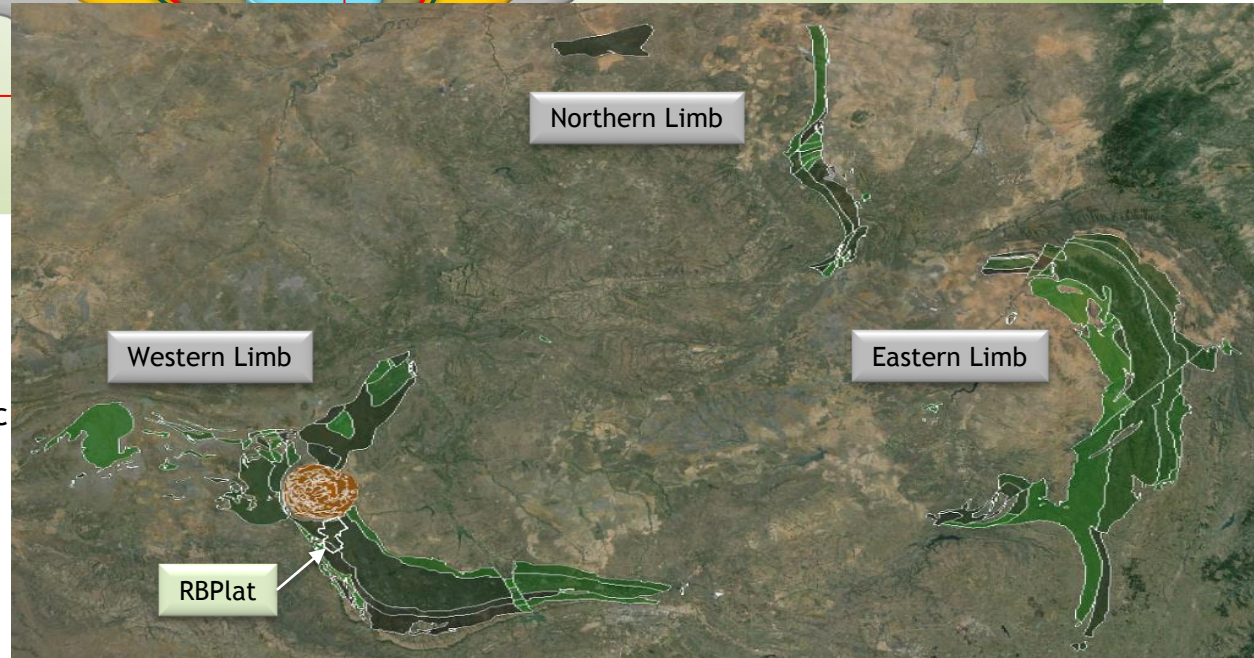


# Bushveld Complex



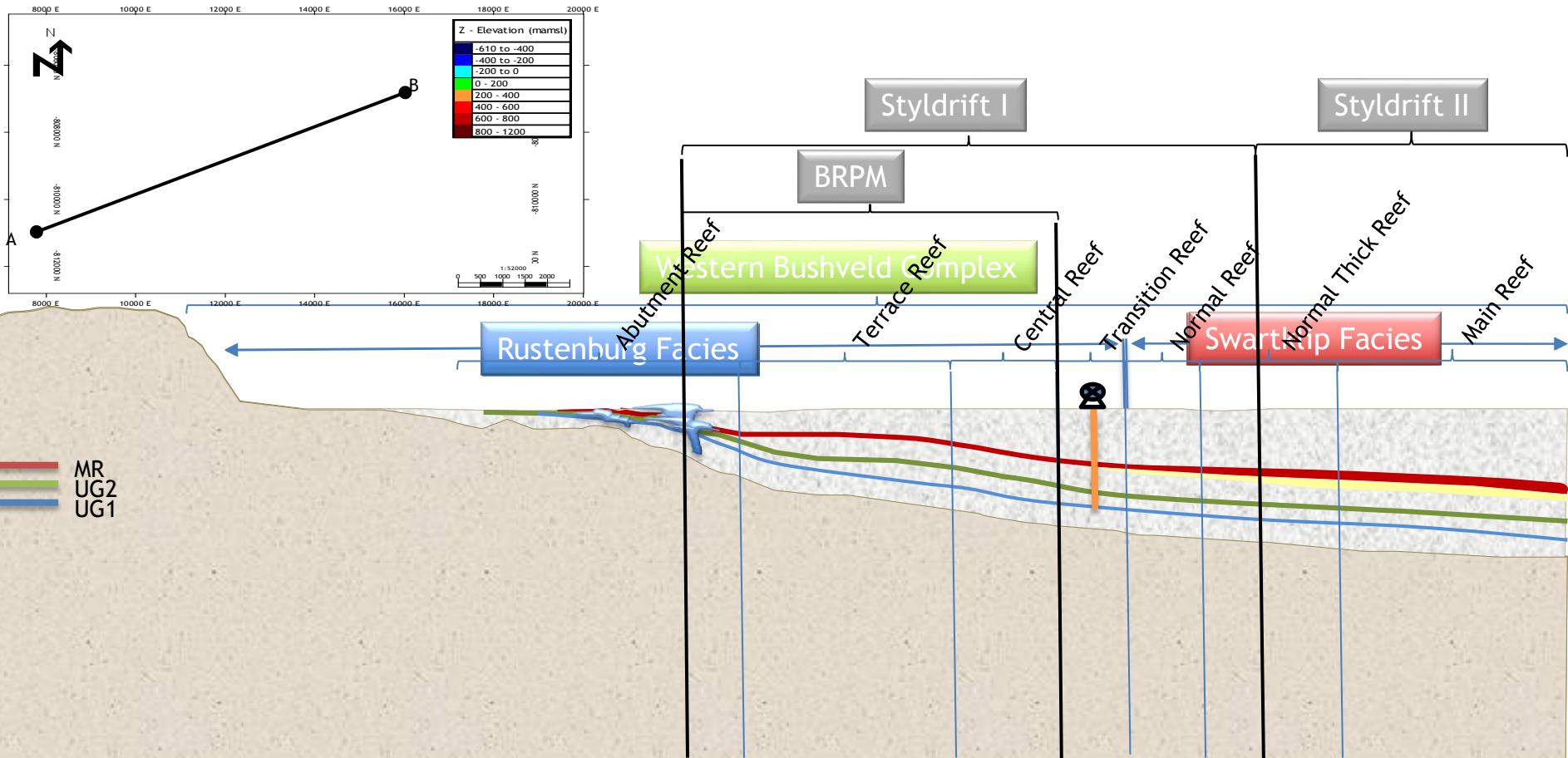
## Bushveld Igneous Complex

- > Suite of mafic sills intruded floor rocks of the Transvaal Supergroup
- > Rustenburg Layered Suite: Largest mafic layered Igneous Complex on earth
- > 65,000 km<sup>2</sup>
- > 2054.4 Ma

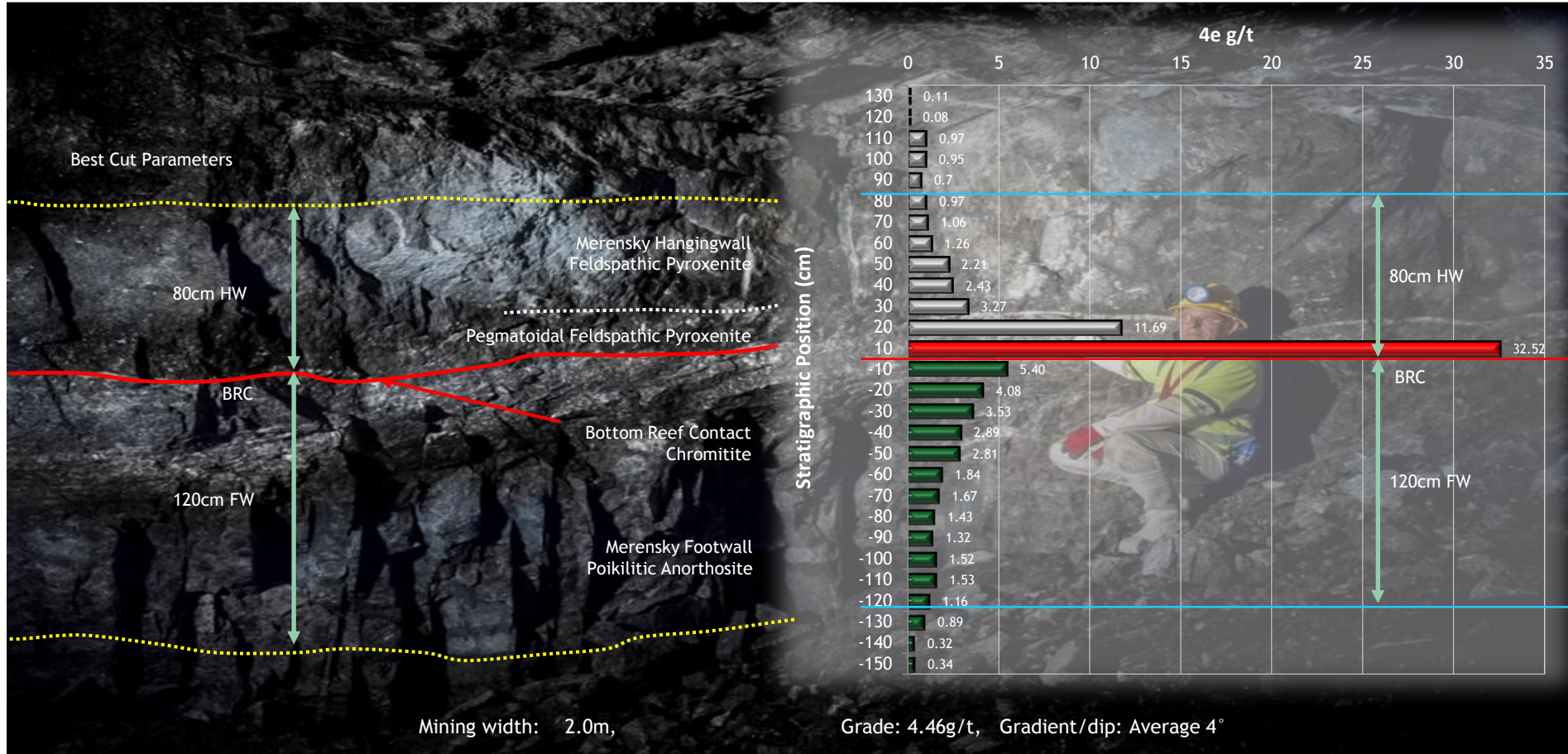




# Geological Schematic: Styldrift



# 600 Level Merensky Reef Grade Profile

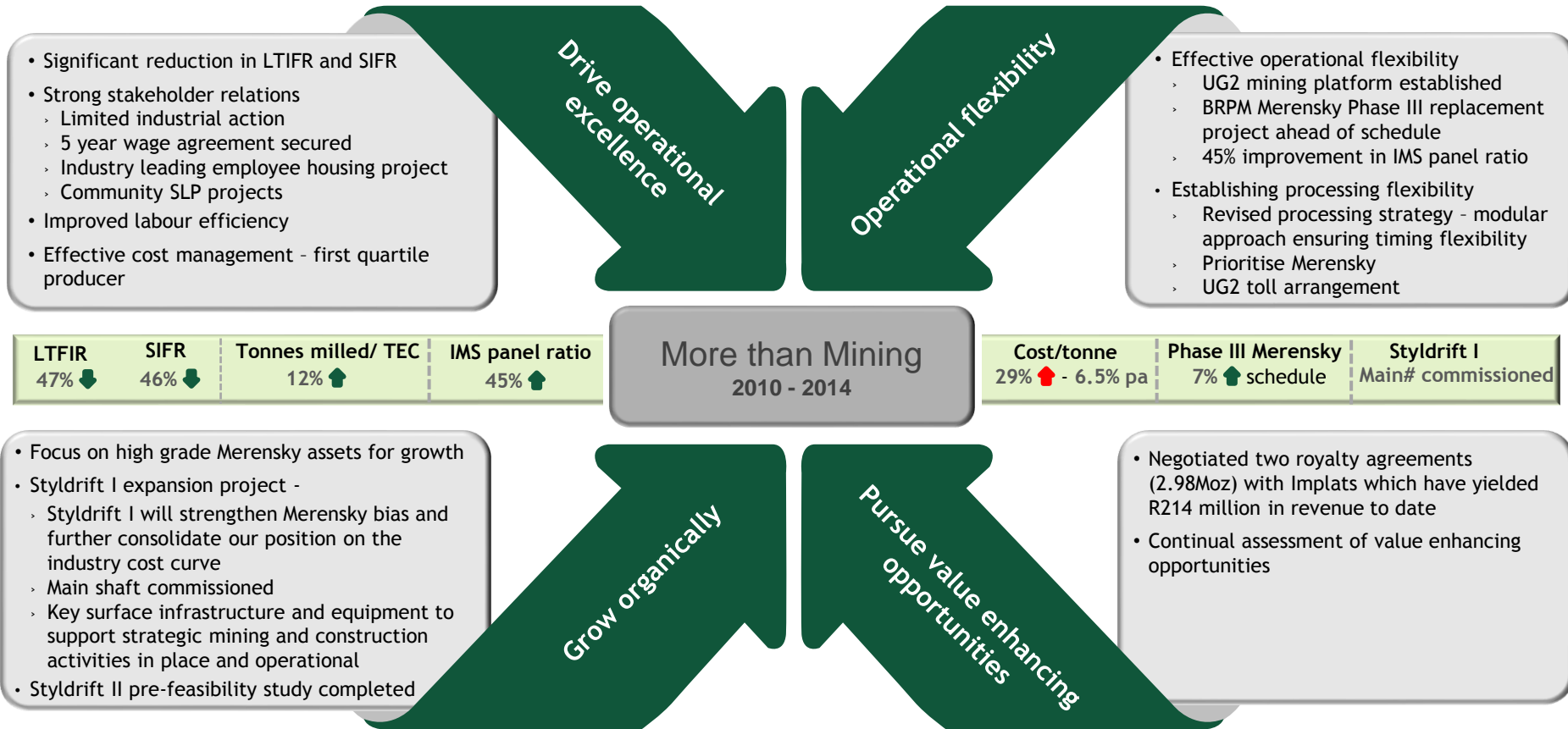




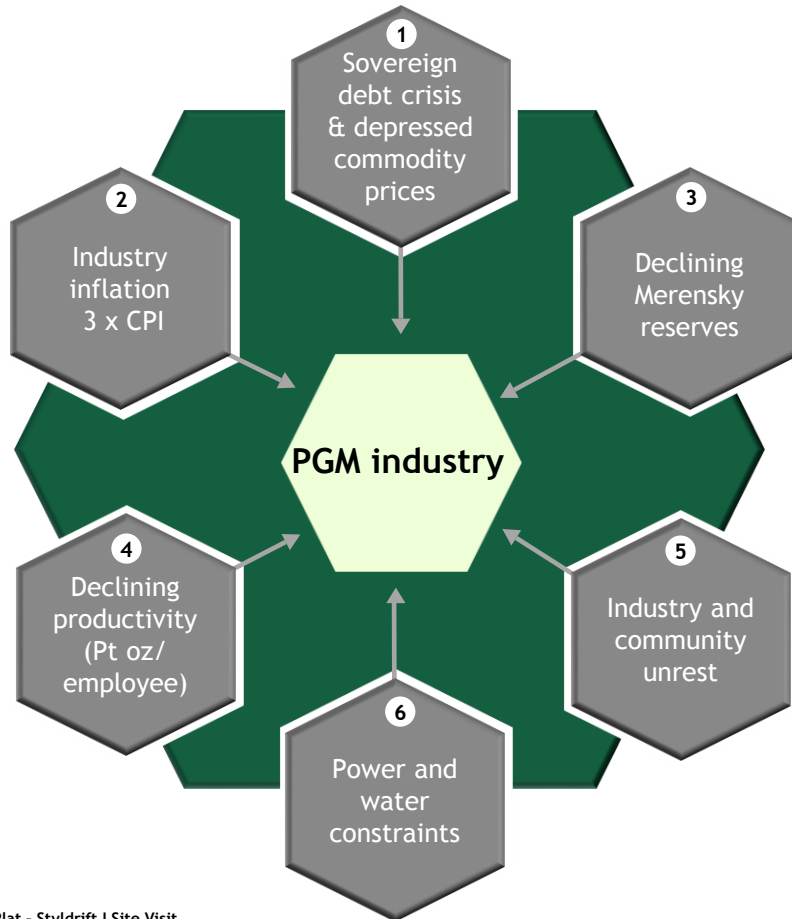
The PGM industry and our  
strategies



# Tailored strategies with inherent flexibility drive efficiencies and create value



# The SA PGM industry - a challenging environment



## Protecting asset value and shareholder wealth - Our approach

- 1**
  - Expect medium to longer term rebound
  - Continue to strategically develop Styldrift I with due cognisance of prevailing market conditions - prudent capital expenditure
  - Optimise current BRPM Merensky extraction

---

- 2**
  - Cost per Pt oz increases since 2010 - 8.25% p.a., per tonne 6.50% p.a.
  - Maintain the first quartile producer position
    - > Maintain focus on cost control and drive mechanisation
    - > Target high-margin yielding assets

---

- 3**
  - Develop and bring into production Styldrift I and II - high grade, high margin Merensky assets
  - Merensky will comprise 92% of RBPlat production by 2019

---

- 4**
  - Zero harm safety approach, regulatory compliance and continuous improvement
  - Targeted mechanisation of mining operations
  - Operational stability

---

- 5**
  - Strong stakeholder relations and *More than Mining* philosophy key
  - No labour unrest in 2014 and 2015

---

- 6**
  - Continuous engagement with Eskom
  - Limit energy cost inflation with energy efficiency projects
  - Water efficiency projects

Industry Mer/UG2 contribution	2000	2012
	MERENSKY (70 %) UG2 (30 %)	MERENSKY (30 %) UG2 (70 %)

# Deteriorating PGM prices - our response

Basket price, 2015 / forecast (R/4Eoz, nom.)



## RBPlat / BRPM JV

- Capital deferment
- Styldrifft expenditure “self funding”
- Rescheduling and restructuring of mining activities - maximise Merensky production
- Operational improvement initiatives
  - > Cost saving/reduction
  - > Improving efficiencies and productivity
  - > Review SLP expenditure

- \$/oz Pt basket price reduced by 30% from June 2014 to Aug 2015
- R/oz basket price reduced by 18% over the same period
- PGM price forecast to remain depressed for the medium term
- Required decisive decisions to protect the business as a whole

## Styldrifft I

- Defer ramp-up - align with market forecasts
  - > Defer “non-essential” infrastructure construction and equipment purchases
  - > Delay construction of 100ktpm module
- Align production capacity to 250ktpm concentrator - 50ktpm
- Align staffing requirements

- Maintain a healthy balance sheet
- Pt pricing environment:
  - > 2015 - R17,000/oz
  - > 2016 - R17,500/oz
  - > Improved metals pricing from 2018

## BRPM

### Defer/reduce capital expenditure

- Defer construction of 14L and 15L on Phase III
- Keep SIB below 6% of opex
- Align staffing requirements

### Operational improvement / cost initiatives

- Increase South shaft Merensky production
- Stop South shaft UG2 development
- Align operational staffing requirements
- South shaft LOM optimisation project

Styl drift I  
The way forward >



# Styldrift Mine - A high grade, shallow, mechanised Merensky mine



## High quality Merensky

- Shallow dip 4° - 6°
- Resource grade of 6.94g/t 4E
- Resource of 72.90Mt
- LOM 30 years - Merensky only



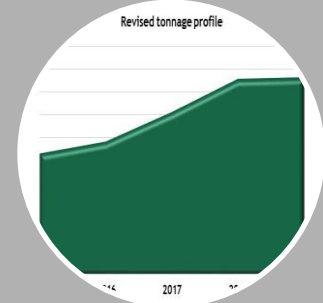
## Shallow Merensky mine

- Twin vertical shaft system:
  - > 10.5mØ Main# - 758m deep
  - > 6.5mØ Services# - 723m deep
- Mean mining depth of 680m



## Key operating statistics

- Mechanised bord and pillar
- ±3000 employees - steady state
- 230ktpm - 2.7Mt/annum
- 4.33g/t 4E delivered grade
- 320koz 4E/annum in concentrate
- 2020 steady state opex: 15% lower than BRPM



## Production ramp up

- First ROM production Q3 2015
- Start of ramp-up Q1 2017
- 36 month ramp-up
- Steady state Q1 2020

High grade, long life

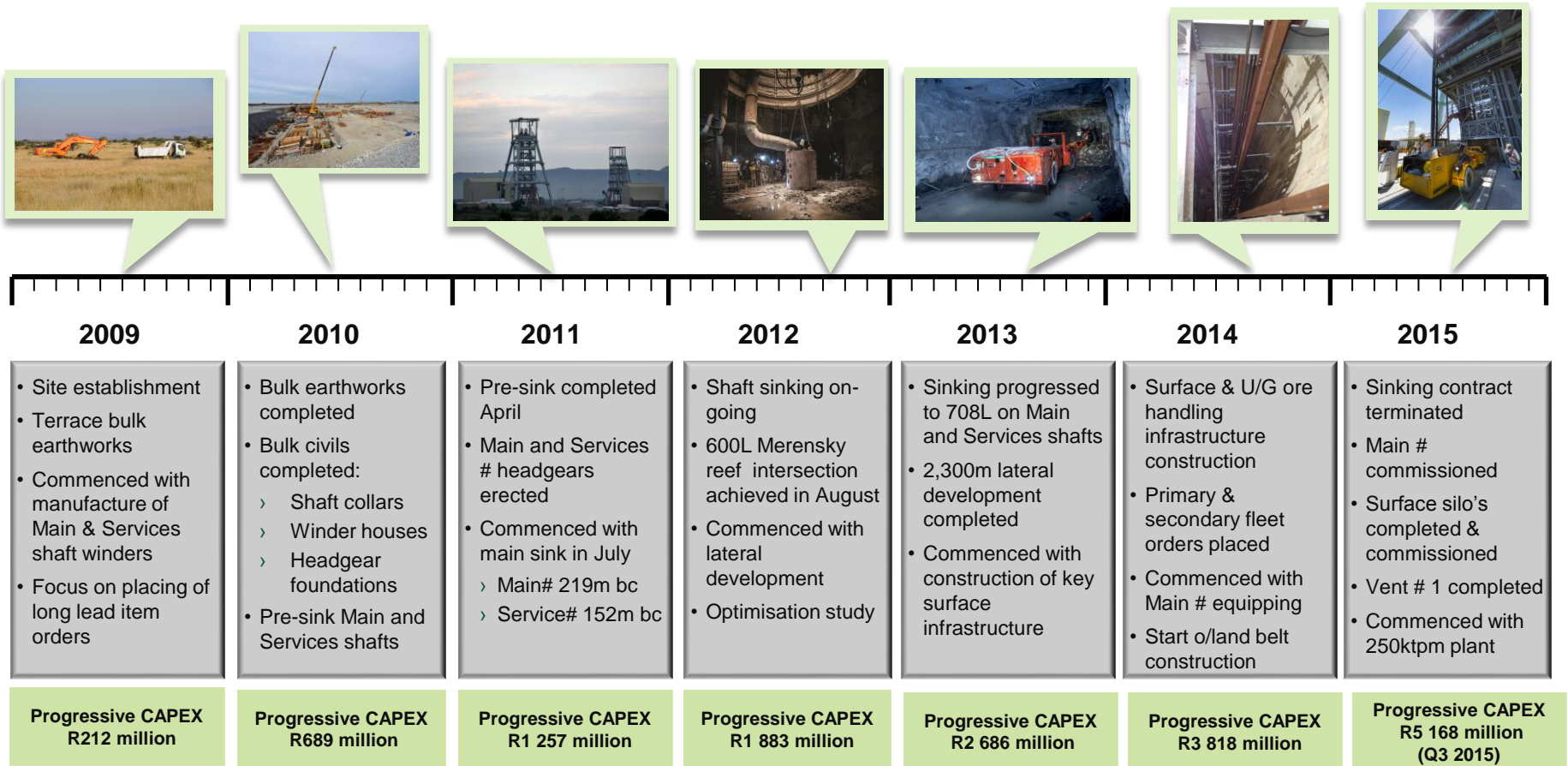
Shallow

Mechanised, low cost

Near term



# Styldrift I - a brief history....



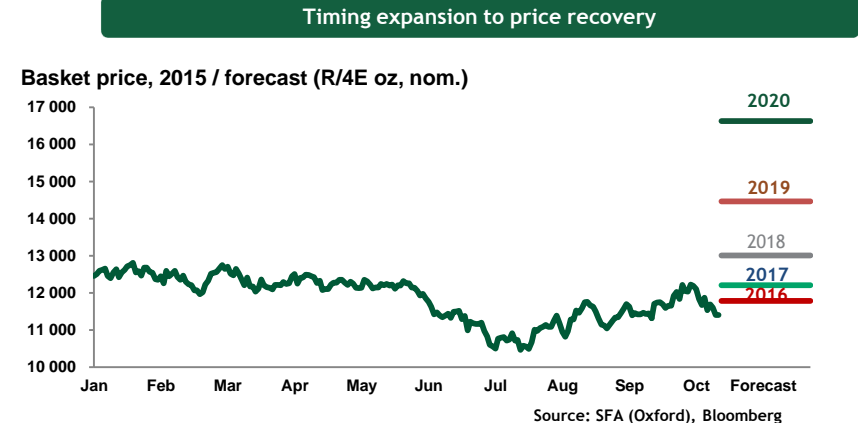
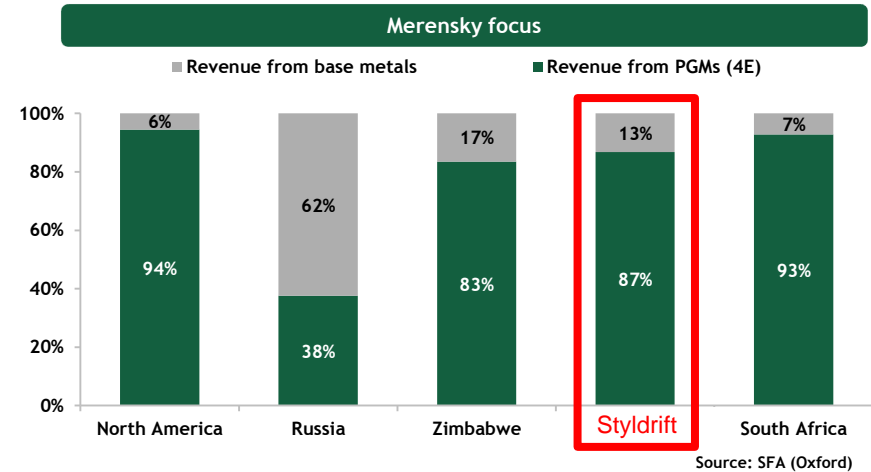
# Styldrift - timing to maximise the revenue stream

## Styldrift I strongly platinum biased

- Historically, Merensky reef has commanded a 25% premium over UG2 reef on a revenue per tonne basis
- High Pt:Pd ratio of 2.3:1 at Styldrift drives premium basket price
- Base metals are a significant revenue driver for Styldrift
- Styldrift Merensky resource of 133Mt
  - > Styldrift I portion is 72.9Mt
- By 2020 RBPlat will produce 90% of tonnes from the Merensky orebody

## Basket price appreciation (SFA Oxford)

- Basket price appreciation gathers pace from 2018
- YTD basket price averages R11,870/4E oz
- By 2018, the basket price should average 10% higher than the YTD 2015 average
- By 2020, the basket price should average 40% higher than the YTD 2015 average



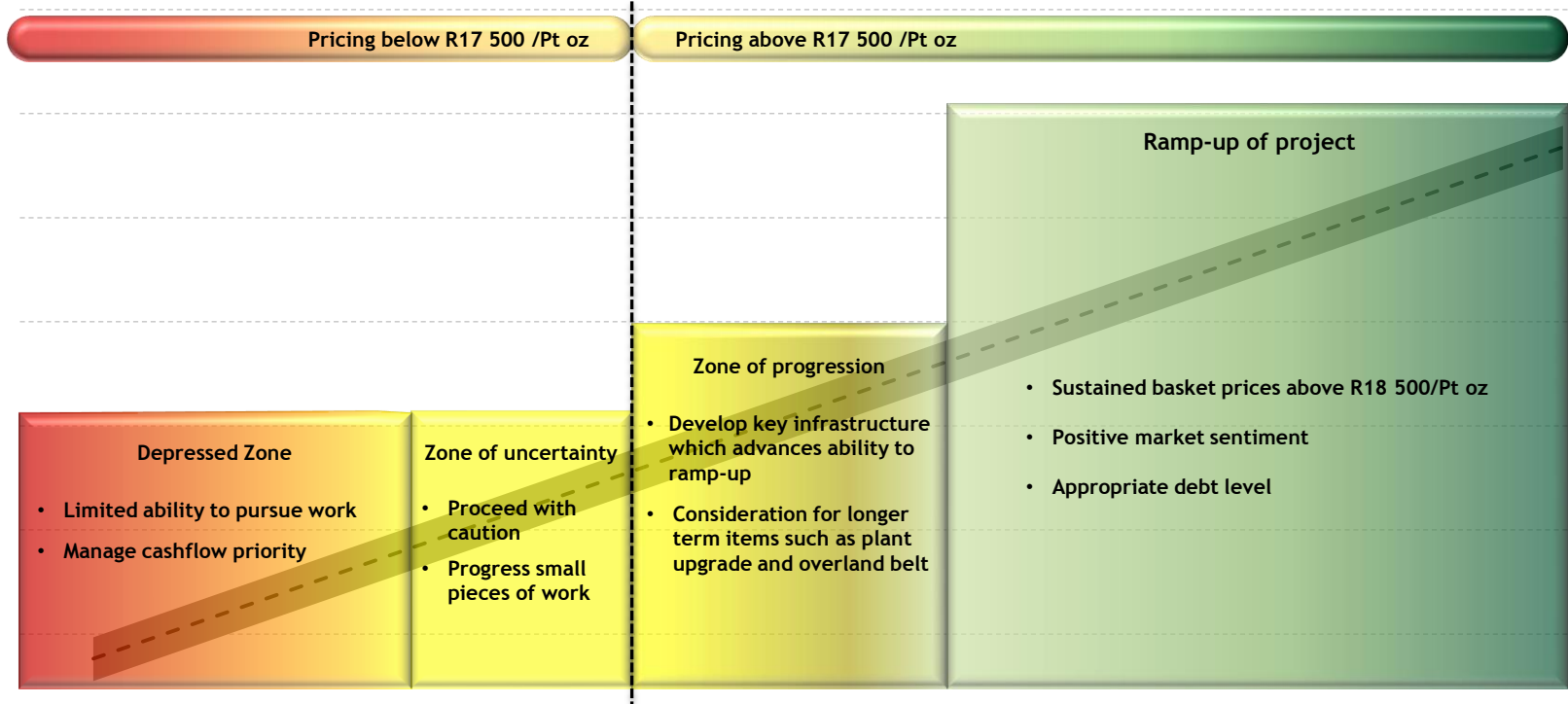
# Revised Styldrift construction programme

Strategically aligning construction and production activities to optimise cashflow whilst maintaining the flexibility to ramp-up as and when conditions permit

- Align construction progress/activities with market conditions
  - > Protect balance sheet
  - > Free cashflow from BRPM
  - > On reef revenues from Styldrift
- Progress key critical long lead items required for ramp-up on a “just in time” basis with focus on
  - > Stoping face length
  - > Footwall development
  - > Ore handling
  - > Water handling
  - > Electrical
  - > Logistics infrastructure
  - > Ventilation
- Optimise timing of processing requirements with ROM output
  - > 250ktpm upgrade
  - > Overland conveyor belt
  - > 100ktpm module
- Optimise mine design, layout and schedule to
  - > Maximise ROM output
  - > Minimise waste/dilution
  - > Improve ROM grade
- Revise fleet and equipment purchases and delivery with revised production profile

# Strategically align work with current market conditions and forecast

## Impact of price on ability to do work



## 2015 Mining and construction - R17,000/Pt oz

- Development of underground infrastructure on 600 level
  - > Workshops
  - > Refuelling bay
  - > Access roadways
- Complete ventilation shaft No.1
- Complete Silo No.2

## 2016 Mining and construction - R17,500/Pt oz

- Complete 250ktpm concentrator upgrade
- 100ktpm module - upfront design work
- Continue to develop 600 level infrastructure
- 642 level footwall preparation for Silo No.3 and No.4
- 642 level decline development and initial ore pass installation
- Services # equipping
- Silo No.4
- Commence with Settler 1 and Pump Chamber related construction

## Current operating status

- 4 production crews operational on 600 level
- Silo No.2 construction progressing well
- Ventilation shaft No.1 has been commissioned
- A total of 40kt of ROM has been hoisted and delivered to the BRPM plant

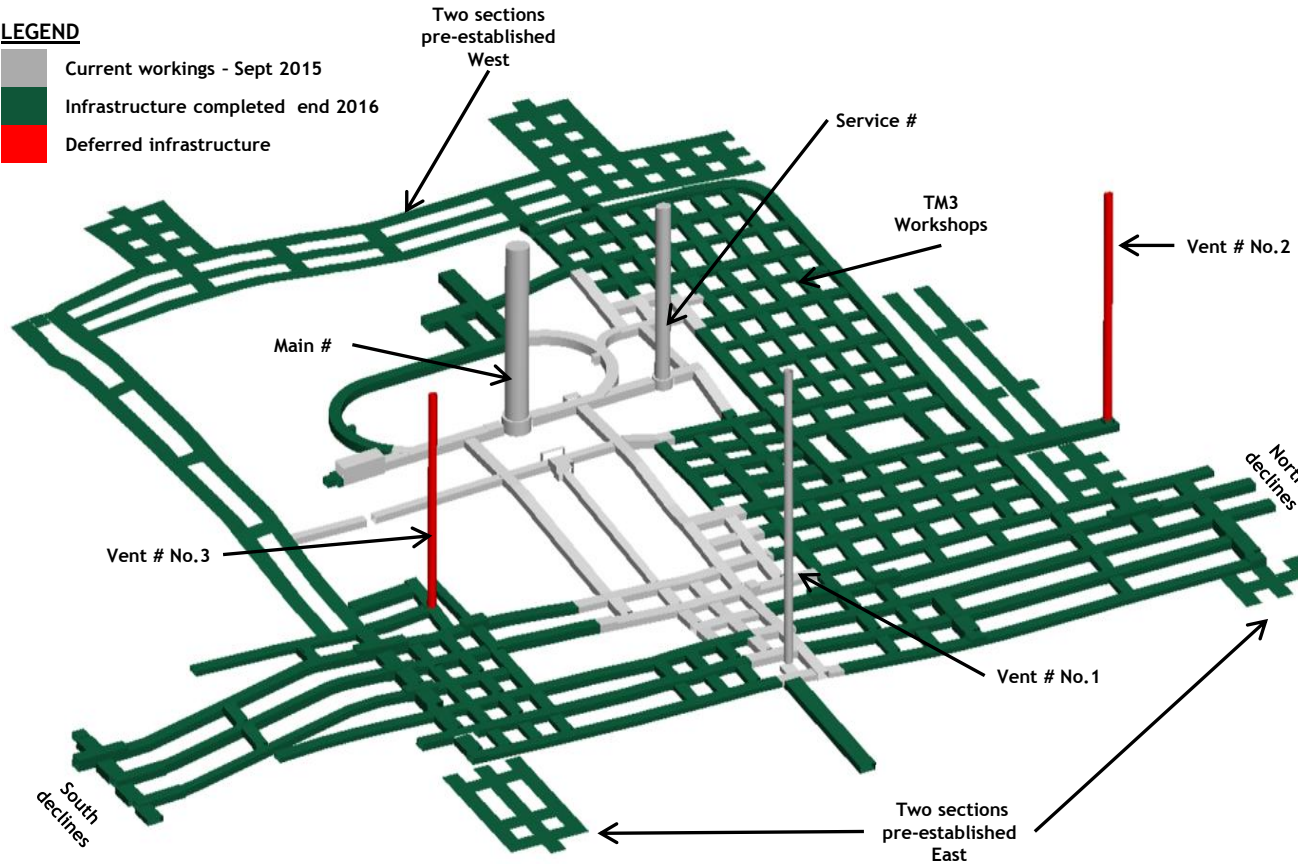
## Infrastructure which will be deferred post 2016:

- Silo 3
- 642 level footwall development outside critical access to declines
- Ventilation shafts No.3 and No.4
- Settler 2
- Overland belt to BRPM concentrator
- 100ktpm treatment plant module construction

# 600 Level development and construction activities

## LEGEND

- Current workings - Sept 2015
- Infrastructure completed end 2016
- Deferred infrastructure



## Development focus

- Maximise available face-length
- Access around shaft infrastructure
- Pre-develop footprint

## Improved grade

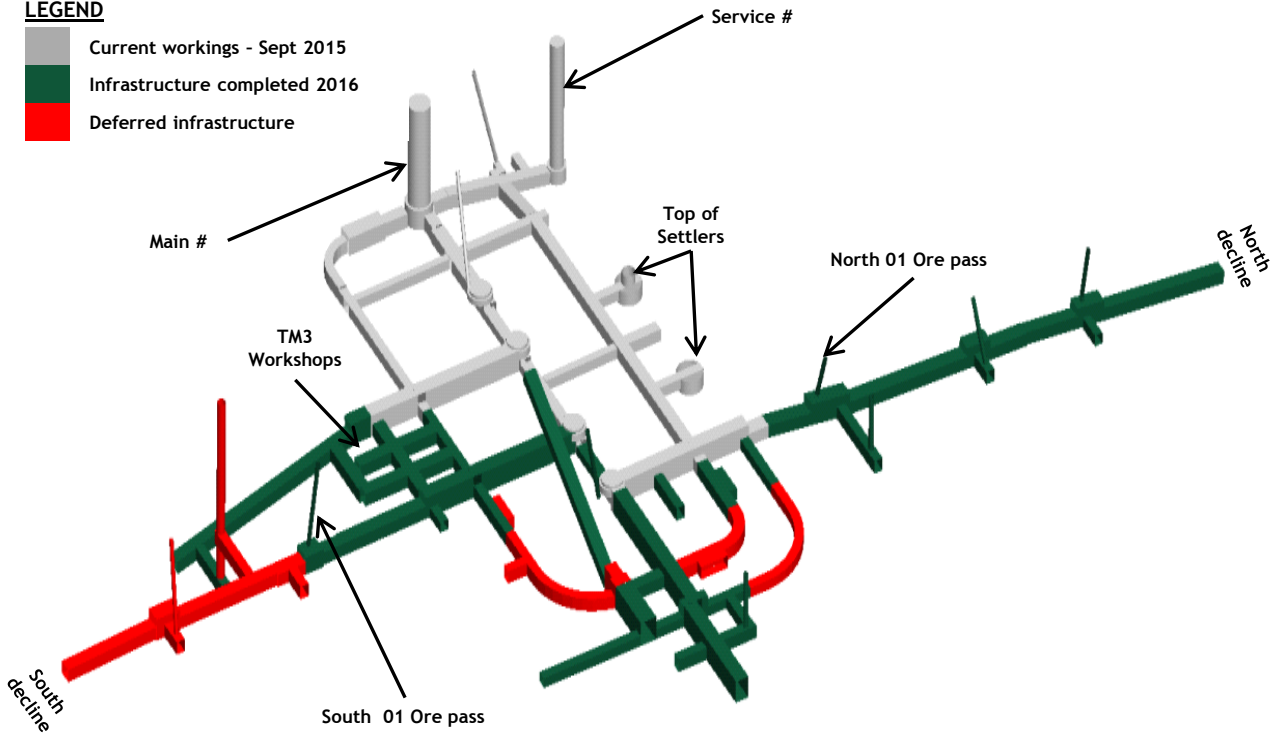
- All development on reef
- Reduced height and dilution
  - > 4,800m<sup>3</sup> of waste dilution removed by optimising the design
  - > Double cut large excavations: reef cut & waste slipping

Description	2015 (m)	2016 (m)	Total (m)
Workshop	170	1 604	1 774
Declines	321	2 778	3 099
Washbays	130	81	211
Stores/Material	169	47	216
Fuel Bays & Management	58	280	338
General Access	159	875	1 034
Tyre Stores	13	30	43
Ventilation Holes & Ventilation Access	0	178	178
<b>Total</b>	<b>1 020</b>	<b>5 873</b>	<b>6 893</b>

# 642 Level mining and construction activities

## LEGEND

- Current workings - Sept 2015
- Infrastructure completed 2016
- Deferred infrastructure



## Development focus

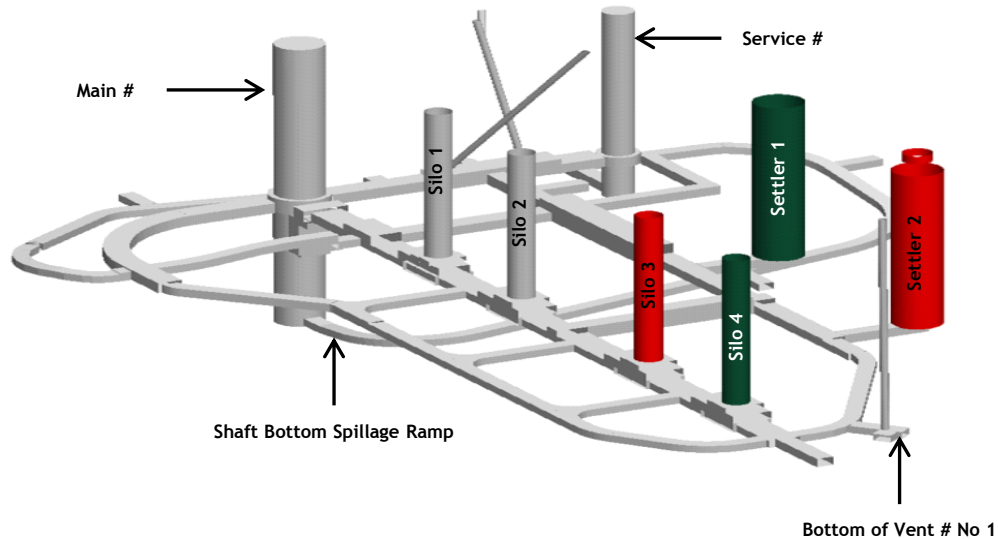
- Ore handling infrastructure
- Access/Advance decline north and south
- North 1 and South 1 ore-passes
- 2 development crews introduced from Q1 2016

Description	2015 (m)	2016 (m)	Total (m)
Declines	-	483	483
General access	-	237	237
Workshop	-	77	77
Vent. Holes & Vent. access	-	72	72
Vertical dev (boxholes)	-	33	33
<b>Total</b>	-	<b>902</b>	<b>902</b>

# 708 Level development and construction activities

## LEGEND

- Current workings - Sept 2015
- Infrastructure completed 2016
- Deferred infrastructure



## Development focus

- Ore handling infrastructure
- Water handling infrastructure
- Level hand over

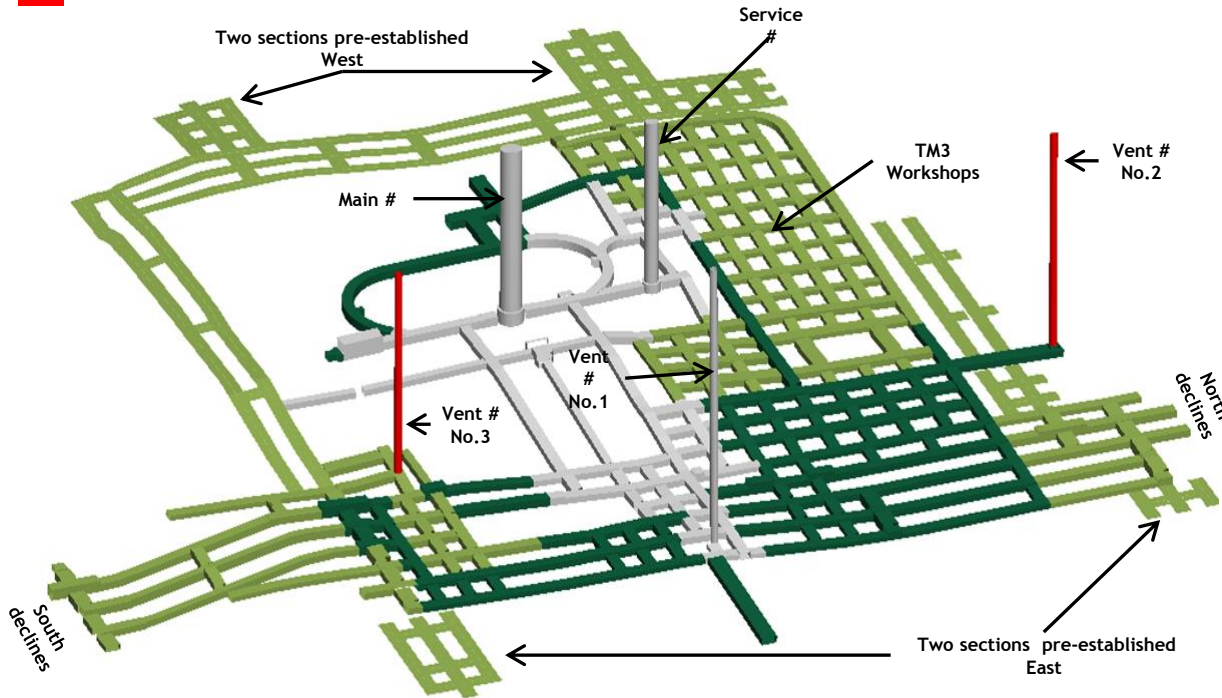
Description	2015 (m)	2016 (m)	Total (m)
Silo's & Settlers	-	68.0	68
<b>Total</b>	-	<b>68</b>	<b>68</b>



# “De-risking” the ramp-up

## LEGEND

	Current workings - Sept 2015
	Original ramp-up footprint
	Revised ramp-up footprint end 2016
	Deferred infrastructure



Description	Original Ramp-up	Revised Ramp-up
Sections pre-established	2	4
Stoping face-length	335m	800m
Workshops pre-developed	4	32
Workshops equipped	4	4

- Substantial increase in initial stoping capacity
- Pre-development of infrastructure will allow:
  - > De-coupling of the mining and construction activities
  - > Improved construction efficiency
- Larger footprint will reduce fleet congestion, improving operational efficiency
- Improved operational flexibility

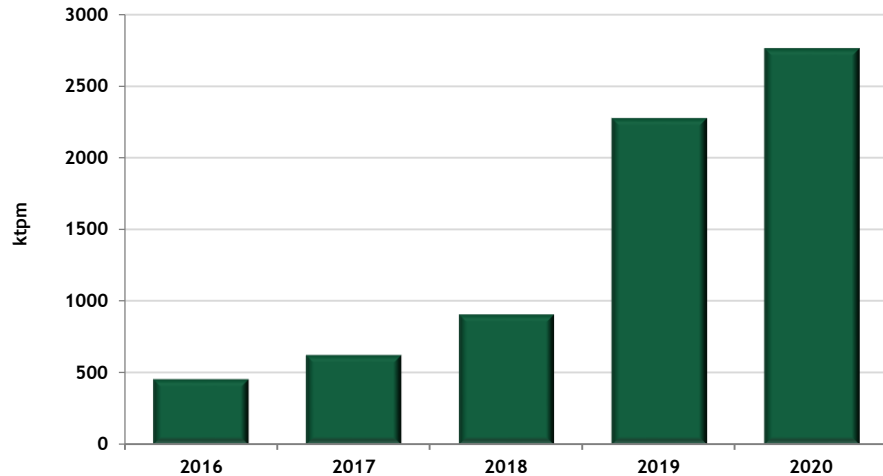


CONCLUSION

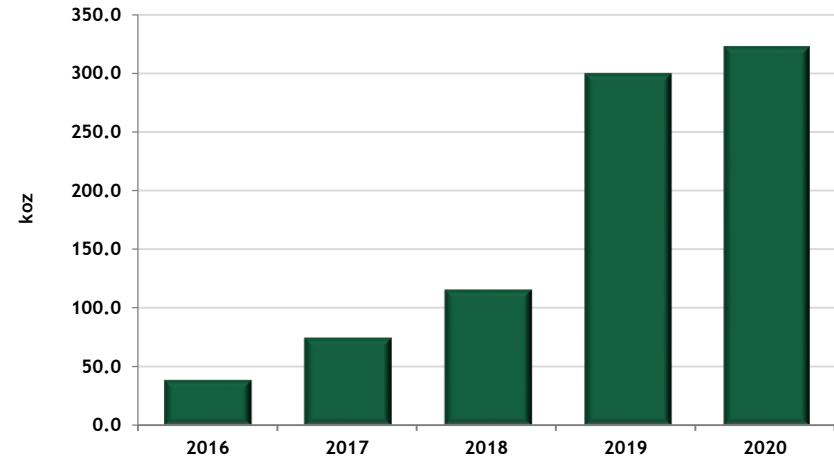


# Styldrift Key outputs

Revised Styldrift ramp-up



Recovered ounces (4E)

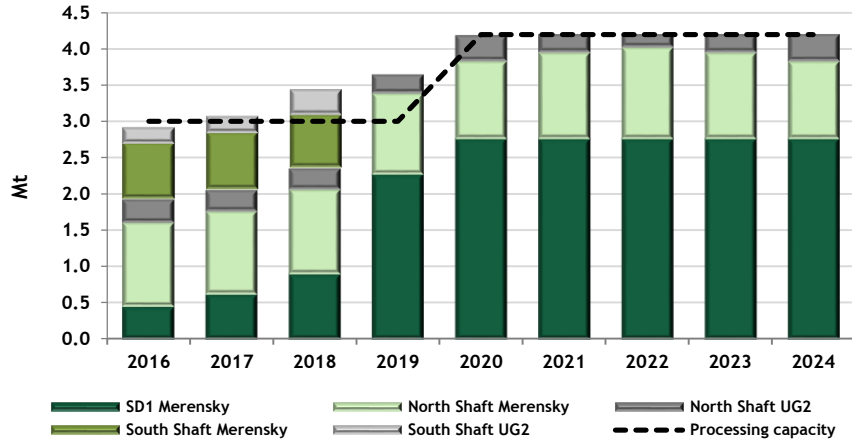


Description	Unit	H1-2015	H2-2015	2016
Cash outflows	R'm	980	469	998

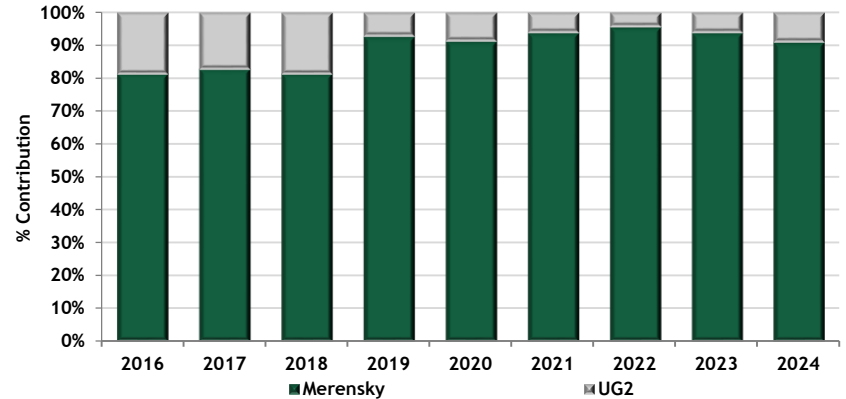
- Total cash outflows related to Styldrift construction activities (mining and processing) for 2016 amounts to R1 billion
  - › R0.7 billion will be funded from on reef development revenues and excess BRPM cashflows - basket price of R17,500/Pt oz
- Steady state production reached in Q1 2020 assuming metal prices improve from 2018

# BRPM JV Production profile

## RBPlat production plan

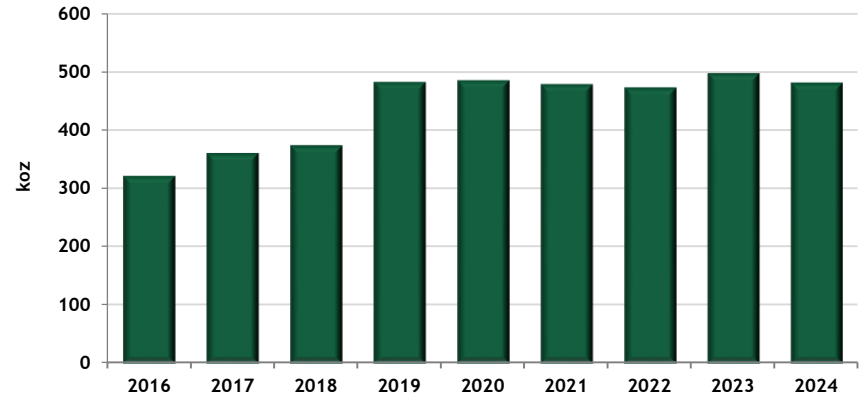


## Merensky contribution



- No South shaft production beyond 2018 - UG2 market dependant
- Concentrating capacity matched to Merensky production
- Merensky contribution 90% by 2019
- Steady state production of  $\pm 480$ koz 4E 2020

## BRPM JV - Recovered ounces 4E



## Styldrift I remains a sound investment

The Styldrift project remains a key part of the Company's organic growth strategy and continues to be developed mainly for the following reasons:

- RBPlat is ungeared with a strong balance sheet
- 70% of Styldrift expenditure in 2016 funded from surplus BRPM cashflows and Styldrift on-reef development (at R17,500/Pt oz)
- High grade
- Shallow mechanised 230ktpm, 320koz/annum 4E mine - significant base metal credits
- Merensky resources of 72.9 million tonnes at a resource grade of 6.94g/t 4E
- First quartile cost producer
- The life of mine exceeds 60 years